



CONSTRUCTION UPDATE

WHITNALL
SCHOOL DISTRICT

Whitnall Middle School
April 22nd—May 10th 2019



SAFETY:

Please be mindful of the construction area as activities continue. No students, parents, or school staff should enter the temporary partitions without a CG Schmidt escort.

PROGRESS:

Science Classrooms

- MEPs (Mechanical, Electrical and Plumbing) rough in for in the wall are completed including inspections
- MEPs above ceiling rough in are ongoing
- Walls have been filled with insulation, are finished putting up drywall
- Currently mudding and taping drywall joints and screws in order to paint

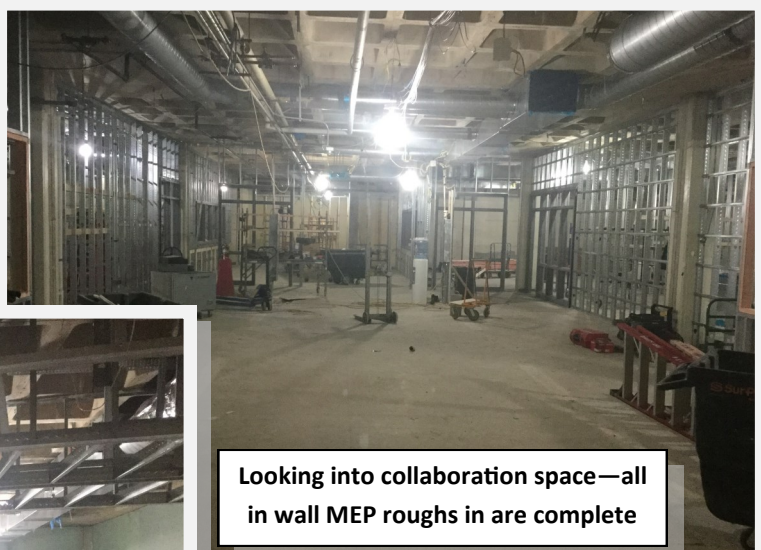
MILESTONE DATES:

- Drywall Starting — May 1st 2019—Goal Achieved!!
- Start Installing Casework—May 28th 2019
- Drop Ceiling Tile—June 17th 2019

GOAL FOR NEXT UPDATE:

Science Classrooms

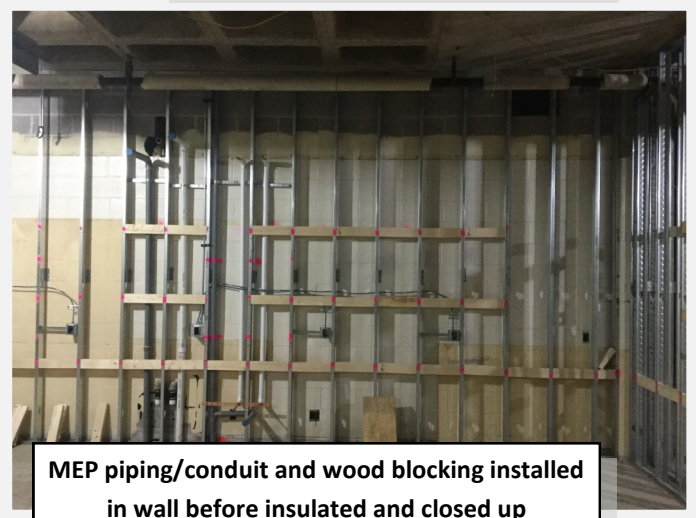
- Mud and Tape will be finished
- Prime and paint 1st coat on all walls
- Paint ceiling in collaboration spaces
- Ceiling grid will start to go in
- Casework will start to be installed.



Looking into collaboration space—all in wall MEP roughs in are complete



Walls were filled with insulation and closed up with drywall. Now mudding and taping the joints before paint



MEP piping/conduit and wood blocking installed in wall before insulated and closed up