



# CONSTRUCTION UPDATE

**WHITNALL  
SCHOOL DISTRICT**

Whitnall High School  
April 1st—5th 2019



## SAFETY:

**Please be mindful of the construction area as activities continue. No students, parents, or school staff should enter the temporary partitions without a CG Schmidt escort.**

## PROGRESS:

### STEM Wing

- Complete demolition of the high school STEM wing has made major strides with walls, floors, lockers, and ceilings removed.
- Complete demolition of bathrooms near auditorium.
- Built masonry walls for auditorium bathrooms and set door frames.
- Temporary partitions built to keep public out of construction areas.

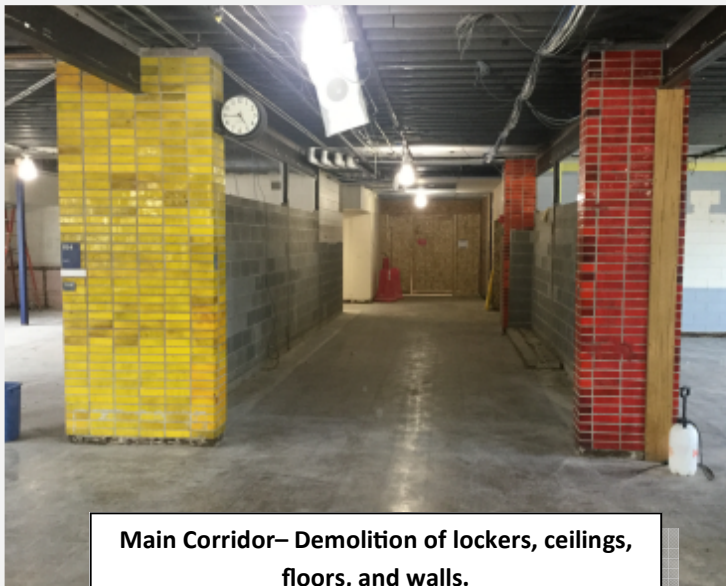
## MILESTONE DATES:

- Auditorium bathrooms completed by 6/14/19
- STEM Wing Storefront glass replacement started on 4/29/19

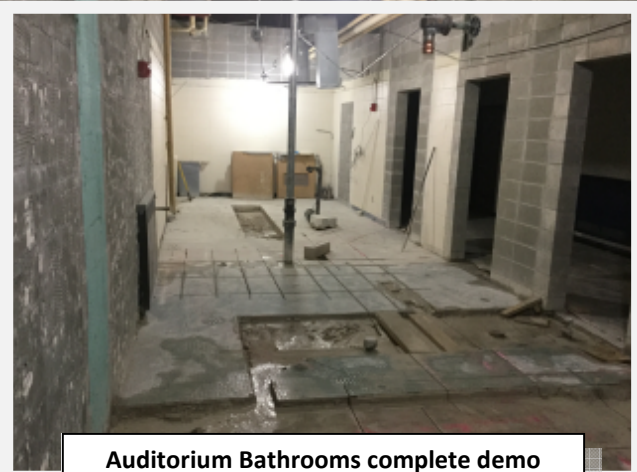
## GOAL FOR NEXT WEEK:

### STEM Wing

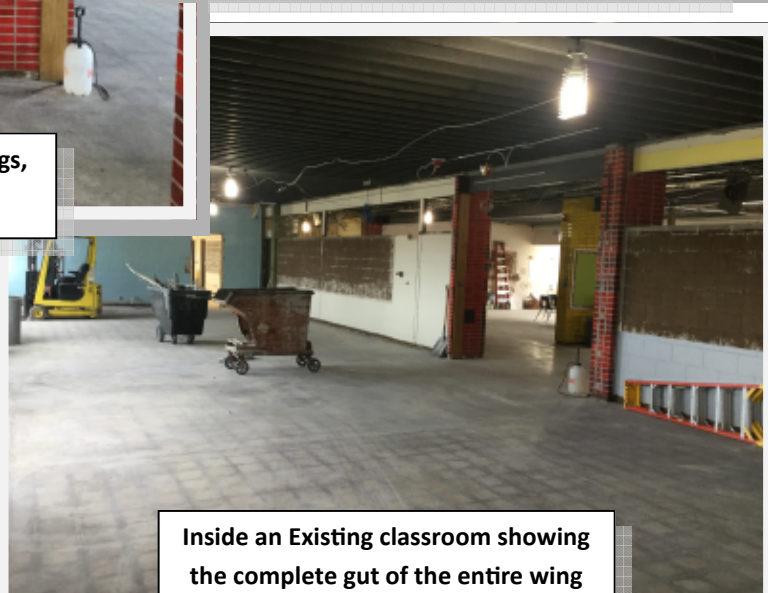
- Saw cut the floor for the auditorium bathrooms for underground plumbing requirements.
- Demo the new overhead doors for the STEM wing
- Complete demolition of STEM wing
- Layout walls for auditorium bathrooms



**Main Corridor— Demolition of lockers, ceilings, floors, and walls.**



**Auditorium Bathrooms complete demo**



**Inside an Existing classroom showing the complete gut of the entire wing**