



# CONSTRUCTION UPDATE

**WHITNALL**  
SCHOOL DISTRICT

Hales Corners Elementary  
April 15th—May 3rd 2019



**CGSCHMIDT**  
INC.

## SAFETY:

**Please be mindful of the construction area as activities continue. No students, parents, or school staff should pass the fence line without a CG Schmidt escort.**

## SINCE LAST UPDATE:

### New Addition

- MEP Inwall is completed along with city inspections. This allows us to start closing walls with drywall
- Spray foam is completed and brick veneer is ongoing, dependent on weather
- Windows have started to be framed and glass installed as brick is being completed.
- The courtyard small retaining wall was built and backfilled with soil. Waiting for warmer weather to set plants.



Brick Veneer is completed in this picture, windows are installed for one room in this picture

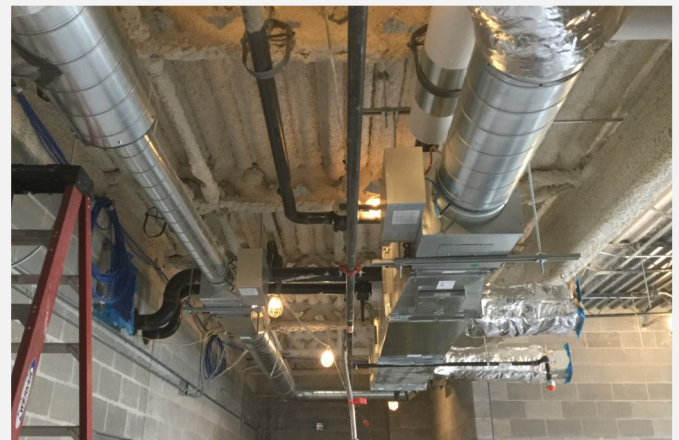
## MILESTONE DATES:

- Drywall Starting—May 6th—Achieved!!!
- Courtyard poured rubber surface Starting—June 3rd
- Enclosure Completed — May 24th

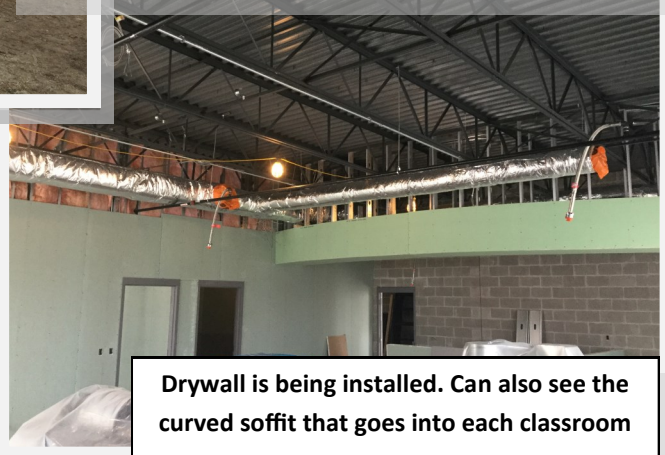
## GOAL FOR NEXT UPDATE:

### New Addition

- MEP above ceiling will be completed which will allow exposed ceilings to be painted
- Drywall will be completed which will allow taping and mudding to happen (close screw holes and joints) which will then allow painting of the walls
- The courtyard playground equipment will be set
- The courtyard will be regraded to its final elevation.
- Sidewalks will be poured in the courtyard



Mechanical, Electrical, and Plumbing (MEP) overhead rough in continues. Also can see the spray fireproofing sprayed to metal deck and joists



Drywall is being installed. Can also see the curved soffit that goes into each classroom