



CONSTRUCTION UPDATE

WHITNALL
SCHOOL DISTRICT

Hales Corners Elementary
March 25th—April 12th 2019



SAFETY:

Please be mindful of the construction area as activities continue. No students, parents, or school staff should pass the fence line without a CG Schmidt escort.

SINCE LAST UPDATE:

New Addition

- Concrete Slab pour is completed.
- Metal Stud Framing is completed.
- Mechanical, Electrical, and Plumbing rough in walls is on going
- Exterior Spray Foam work is ongoing
- Brick Veneer is following spray foam

MILESTONE DATES:

- Roofing Completed — April 2nd—Completed
- Enclosure Completed — June 24th

GOAL FOR NEXT UPDATE:

New Addition

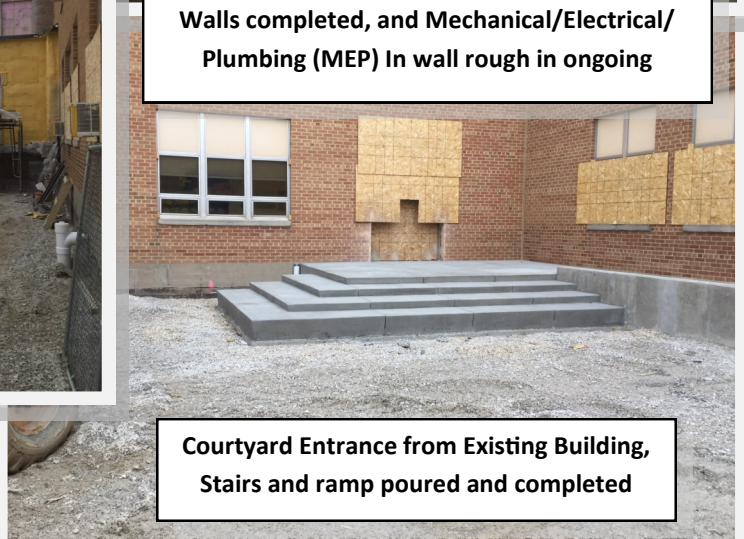
- MEP in wall rough in will be completed.
- Drywall will be started.
- Spray foam will be completed
- Brick veneer will continue to be installed, depending on weather
- Windows will start to be installed.



Concrete slab poured/completed, Interior Stud Walls completed, and Mechanical/Electrical/Plumbing (MEP) In wall rough in ongoing



Exterior Spray Foam and Brick Veneer



Courtyard Entrance from Existing Building, Stairs and ramp poured and completed