



# CONSTRUCTION UPDATE

**WHITNALL**  
SCHOOL DISTRICT

Hales Corners Elementary  
June 17th—July 5th 2019



## SAFETY:

**Please be mindful of the construction area as activities continue. No students, parents, or school staff should pass the fence line without a CG Schmidt escort.**

## SINCE LAST UPDATE:

### New Addition

- Casework is fully installed.
- Ceiling Tile is installed
- Bathroom fixtures and accessories are installed
- Storefronts are installed.

### Remodel

- Demolition is complete.
- MEP's are working on above ceiling installs

## MILESTONE DATES:

- New addition punch list week of -7/29
- Ceramic tile starting -7/22

## GOAL FOR NEXT UPDATE:

### New Addition

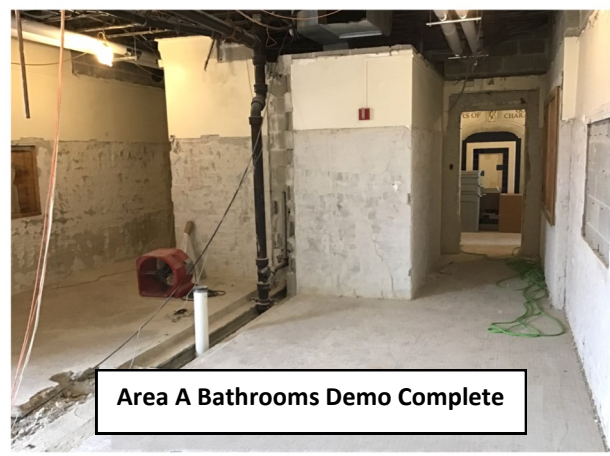
- Doors and hardware will be completed.
- Flooring will be completed
- We will be working on punch list.

### Remodel

- Masonry infills will be completed
- Plumbing rough ins for bathrooms will be worked on
- Classroom heating una-vents will be installed.
- Metal stud walls will be framed out.



Main Entrance Canopy Demold



Area A Bathrooms Demo Complete



Collaboration Space Storefront Installed



New Main office Space Demold Complete