



## A MESSAGE FROM THE SUPERINTENDENT

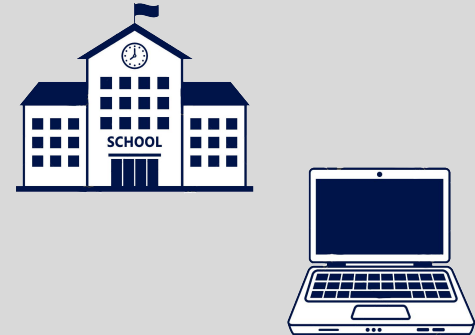
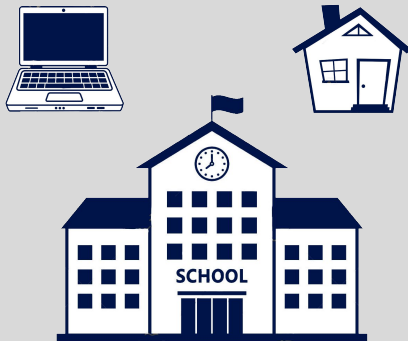
Hello, Whitnall Community!

I hope you are all being safe and staying healthy. I would like to share some high-level information with you regarding our reopening. Please know that there will be much more information shared soon, but I'm hoping that this document will answer the questions and assuage the concerns that arose following our reopening survey. Also, in this document you will find a timeline of our next steps, some of which will require or welcome your involvement. Before getting into our current thinking, I want to emphasize that the district's reopening will be driven by the best information, not by the most popular opinion or by the desire for a fast decision. While it is our preference to return with in-person instruction, five days a week, we are planning for **both** in-person and virtual models. In recent discussions with health experts, it has become clear that the need for virtual learning is very likely. But there are still around six weeks until the beginning of the school year. As we all know by now, this situation is ever-changing. That is why we are planning for both models and will not make a final decision on which one to implement until August 17. It's simply too soon to make the most prudent decision. Again, I hope this document addresses some of your questions and concerns, and I thank you for your investment in this difficult and important decision.

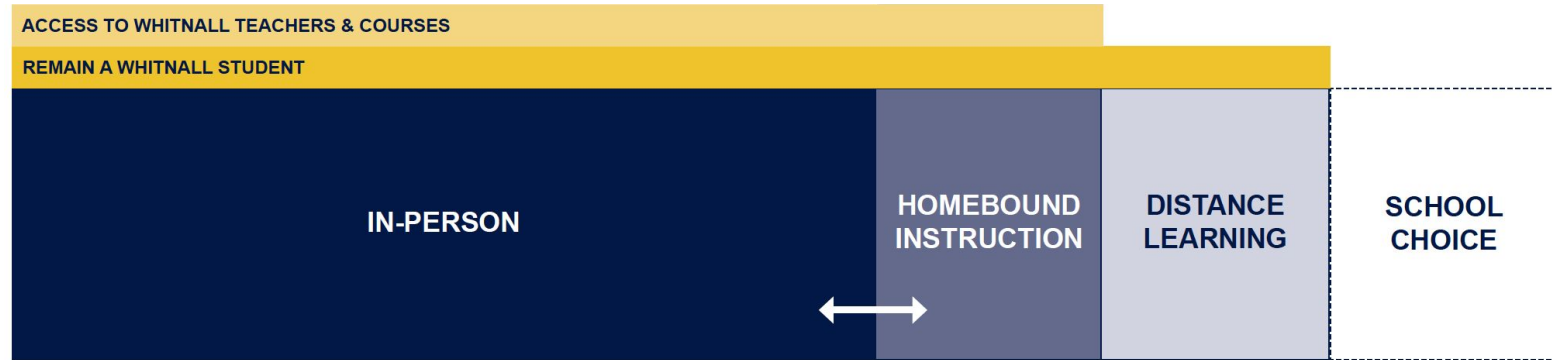
Lisa L. Olson, Ph. D.  
Superintendent

# INSTRUCTIONAL MODELS

MODEL A: IN-PERSON	MODEL B: VIRTUAL	MODEL C: HYBRID
<b>preferred</b>	<b>likely</b>	<b>nonviable</b>
In-person instruction, five days a week, with precautionary measures. This model includes distance learning for high-risk households or households that generally do not feel it is safe to return. This model also includes homebound instruction. More information on this model can be found on the following slide.	Virtual instruction through a new platform, with primarily synchronous learning.	Due to our expansion of Model A, staffing limitations, family schedules, and the minimal impact on health risk mitigation, we have decided not to develop hybrid instruction.



# MODEL A: IN-PERSON



## HOMEBOUND INSTRUCTION

- An enhancement of [an existing practice](#)
- **Temporary** absence from in-person instruction due to illness, injury, or quarantine
- **Requires medical verification**
- Remote virtual learning using synchronous instruction during scheduled class times

## DISTANCE LEARNING

- Virtual courses and instruction **may be outsourced** if not enough students enroll to allow a WSD teacher to reduce their in-person teaching load
- Students complete at home
- Grades at the high school level will not be calculated into GPA, but will be recorded, if a non-WSD course is taken
- **Minimal commitment is one semester**

## SCHOOL CHOICE

- [Home-Based Private Education \(Homeschooling\)](#)
- Private school
- Open enroll out or return to resident district *(please note that a non-resident student who returns to their resident district is not guaranteed re-entry through open enrollment in a subsequent school year)*

# FAQ

## WILL STUDENTS AND STAFF BE EXPECTED TO WEAR FACE COVERINGS? *MODEL A*

Yes, all students and staff will be expected to wear face coverings. The district will provide at least one cloth mask to each student and staff member. We understand that wearing a mask for the entirety of a school day and during all tasks is not practicable. Mask breaks and exceptions will be implemented, especially at the elementary level.

## WILL THERE BE OTHER PRECAUTIONARY MEASURES IN PLACE? *MODEL A*

Yes. In addition to masks, we are also planning for physical distancing, sanitation stations, barriers, enhanced disinfecting, and much more. The full list of precautionary measures will be included in the official reopening plan.

## WHAT IS HAPPENING WITH THE FOCUS GROUP I SIGNED UP FOR IN THE REOPENING SURVEY?

We had over 350 parents express interest in participating in a reopening focus group. Since this is far too many people to include in a traditional focus group, we are instead going to be holding parent meetings (virtually, of course). There is more information and a sign-up link later in this document. In addition, the names have been divided by school and sent to principals for potential building-level focus groups.

???

# TIMELINE

# 2020

monday JULY 27	tuesday JULY 28	JULY 28-30	monday AUGUST 3	monday AUGUST 17	SEPTEMBER 1-4
<p>A current draft of the reopening plan will be shared at the July 27 Board of Education business meeting. In-person attendance is not permitted due to physical distancing, but as always, the meeting will be recorded and uploaded to <a href="#">our YouTube channel</a> the following morning. Public comments can be submitted by 5 PM on July 27.</p>	<p>On July 28, the reopening plan and a survey will be sent to parents. The survey will ask parents to commit to distance learning (see page 3), if the district were to implement Model A.</p>	<p>July 28-30, parent meetings will be held virtually each day. You will be able to ask any questions you may have about the reopening plan. You can sign up using the link on the following page, if interested.</p>	<p>The Model A survey will close at 8 AM.</p>	<p>The district will make a final decision on which model will be implemented in the fall.</p>	<p>Regardless of the model chosen, this will be a re-entry week with a different 25% of students attending each day (divided by last name). This will give us a chance, in smaller numbers, to teach and test our precautionary measures (Model A) or to simply have students get to know their teachers (Model A &amp; B).</p> <p>Full instructional days will begin September 8.</p>

# PARENT MEETINGS



TUESDAY, JULY 28	WEDNESDAY, JULY 29	THURSDAY, JULY 30
9 AM   7 PM	12 PM   5 PM	9 AM   7 PM

We are holding parent meetings on July 28, 29, and 30. These meetings will be virtual and we are asking parents to sign up for one of the six different options. We are limiting each timeslot to 50 parents to ensure technology bandwidth strength and the ability to respond to as many questions as possible. If all timeslots are full, we will add more options. You will receive a link to a Google Meet virtual meeting link prior to the meeting. Meetings are scheduled for 45 minutes and will collect questions asked and share out.

Link to sign up for meetings: <https://www.signupgenius.com/go/60B0C4AADA E2CA5FD0-whitnall>

## ONE LAST THING

Our ability to return with in-person instruction, 5 days a week, is dependent upon the COVID-19 numbers--cases, hospitalizations, deaths. If you want our school buildings to be open, we need you to be safe, to be taking the necessary precautions, not only for the sake of our decision, but also for the well-being of those in our community.

Thank you and stay healthy.

