

Special 2019 Spring Issue

KIDS EDITION

Where Learning & Fun Come Together

SUNSHINE & GOOD TIMES



CONTENTS

- 1** Summer Programs Open House
Summer Reading Program
- 2-5** Greenfield Parks & Recreation
 - Summer Playgrounds
 - NEW Summer Camps
 - Movies in the Park (FREE)
 - Camping in Konkel
 - Registration Form
- 6** Whitnall School Dist. Summer School
- 7** Greenfield School Dist. Summer School
- 7-8** Community Events 2019
 - Farmers Market
 - Clean Up Green Up
 - Dan Jansen Family Fest
 - Vietnam Moving Wall
 - 4th of July
 - AMP at Konkel Summer Billboard (Concerts & Events)

COMING SOON!

The Summer 2019 Recreator will be mailed to all Greenfield residents the beginning of May.

HELLO,

At a time when our School Districts and City are working more closely than ever, we are excited to give you information on summer school classes and summer playground programs in one guide.

Inside you'll find all sorts of information about 2019 summer playgrounds, summer school, family events and more offered by the City of Greenfield, the School District of Greenfield, and the Whitnall School District.

All of us are devoted to providing the best summer programming that we can for our children and strive to keep them active, engaged, and safe during the summer months. We hope you take advantage of and enjoy what we have to offer.

Sincerely,

Lisa Elliott, Superintendent, School District of Greenfield
 Lisa Olson, Superintendent, Whitnall School District
 Michael J. Neitzke, Mayor, City of Greenfield

DON'T FORGET TO "CHECK OUT" THE SUMMER READING PROGRAMS AT YOUR LOCAL LIBRARY

Greenfield Public Library
www.greenfieldlibrary.org
 5310 W. Layton Ave. • Greenfield
 (414) 321-9595

Greendale Public Library
www.greendalepubliclibrary.info
 5647 Broad St., Greendale
 (414) 423-2136

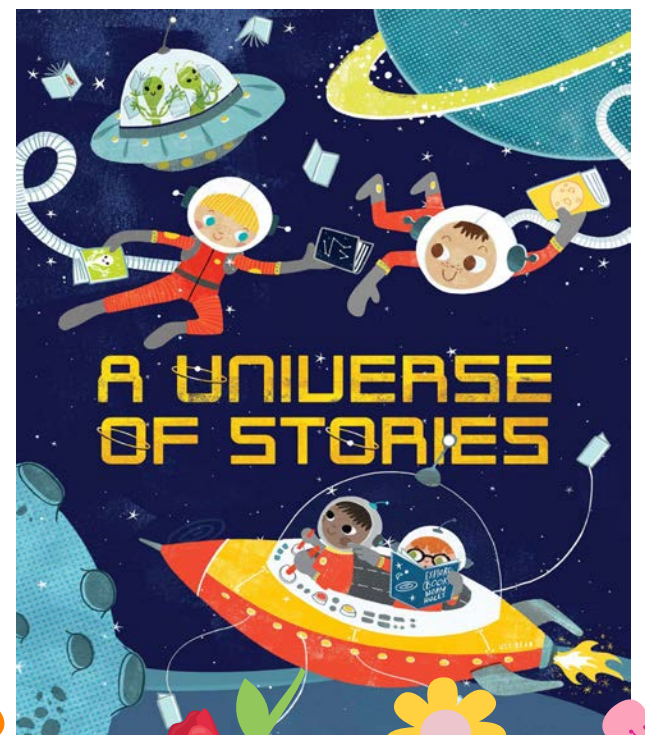
Franklin Public Library
www.mcfls.org/franklin
 9151 W Loomis Rd • Franklin
 (414) 425-8214

Hales Corners Public Library
www.mcfls.org/halescorners
 5885 S. 116th St. • Hales Corners
 (414) 529-6150

YOU'RE INVITED! JUMP START SUMMER! OPEN HOUSE

Representatives from the **Greenfield School District** and the **City of Greenfield Parks & Recreation Department** will be available to answer questions and register for summer programs.

Thursday, April 25th
4:00-6:00 PM
Greenfield Public Library
 (5310 W. Layton Avenue).



2019 SUMMER PLAYGROUNDS/ADVENTURE

PLAYGROUND/ADVENTURE GENERAL INFORMATION

PLAYGROUND/ADVENTURE CODE OF CONDUCT

The Greenfield Parks & Recreation Summer Playgrounds provide group activities for children in a safe, supervised environment at local schools & parks.

Features:

- ✓ Held at both School Districts —
- **Whitnall** (Grades K5-6)
- **Greenfield** (Grades K5-6)
- ✓ **Edgewood/Konkel School Weeks** (Grades K5-6)
- ✓ Field Trips
- ✓ Energetic Staff
- ✓ Playground Picnic
- ✓ T-Shirt (Please indicate size on registration form)
- ✓ Arts & Crafts
- ✓ Indoor/Outdoor Activities
- ✓ Playground Plus (*All Day*)
- ✓ School's Out Program (*Half Day - after summer school*)

LEADERSHIP/STAFFING

Our energetic leaders are skilled in sports, game leadership, arts & crafts, and age appropriate activities. Our staff is composed of college students, recent college graduates, teachers, and parents. Each site has a supervisor, who is responsible for the overall operation.

WEATHER DEPENDENT?

These are rain or shine programs. Thanks to the cooperation of the School Districts, the program generally has use of a gym, the cafeteria, and restroom facilities in addition to the outside school grounds.

AGE/PROGRAM

Participants **MUST** meet the age requirement on/or before the first day of the program they wish to enroll in. The Parks and Recreation Department reserves the right to drop a child from the program if they are enrolled at a site that is not appropriate.

SELF-CARE

Participants must be able to provide self-care in a group setting (able to follow the group, able to use restroom facilities, able to wash hands without assistance, and able to control their behavior while participating in the sites activities). *This is not a licensed day care and the Parks & Recreation staff is not able to provide one-on-one care or dispense medications.*

ATTENDANCE

Participants are welcome to attend the program on the days most convenient for them. (Note: Rates are not pro-rated for missed days. You pay for the entire time whether or not your child attends every day.) Each child must check-in upon arrival and check-out on departure with the designated staff member. For safety reasons, participants will not be allowed to leave the grounds without written consent from their parent/legal guardian.

FIELD TRIPS

Field trips are included in the program. There will be no activities taking place at the sites when the group goes on the field trip. All staff attend the trips to provide adequate supervision of participants. If you would prefer your child does not go on a field trip, then they will need to stay home on the day of the trip.

T-SHIRTS

Each registered participant will receive one summer playground t-shirt for the season regardless of the number of sessions they may attend.

(R) = RESIDENT

Greenfield resident or Whitnall School District resident and/or attending a Greenfield or Whitnall School

(NR) = NON-RESIDENT

To ensure that the playground experiences are positive for everyone involved and that one child's behavior does not limit or interfere with another child's experience, the following "Code of Conduct" will be administered throughout the summer:

- Children must be quiet and attentive when the playground supervisor or leaders are presenting instructions and/or information.
- Children will be responsible for the equipment they are using. They must use the equipment for the intended purpose and are responsible for putting the equipment away when done.
- Running is not allowed in the hallways.
- Hitting, kicking, pushing, and other types of VERBAL and/or PHYSICAL behavior will not be acceptable among the children and will not be tolerated.
- Weapon-like toys, including squirt guns will not be allowed.

Our discipline procedures will be spelled out in greater detail in the Playground site newsletter. Please take time to review this information with your child so we can have a safe and enjoyable summer. Depending upon the severity of the conduct, staff will implement time-outs to 1 day suspensions to removal from the program.

Call (414) 329-5370 for more information or visit our website @ www.ci.greenfield.wi.us/parksrec

WHITNALL SCHOOL DISTRICT PLAYGROUNDS

2019-2020 School Year — Youth (Entering K5-6th Grades)

-REGISTRATION DEADLINE-

Registrations after this date will only be accepted if there is space available and will incur a \$15 late fee.

Monday –Friday Program

- **"A" Monday, June 17-Friday, June 28**
(Whitnall Summer School) (10 day program)
Registration Deadline: Tuesday, June 4
- **"B" Monday, July 1-Wednesday July 3**
(3 day program - no July 4 or 5)
Registration Deadline: Tuesday, June 18
- **"C" Monday, July 8-Friday, July 19**
(10 day program)
Registration Deadline: Tuesday, June 25
- **"DE" Monday, July 22-Friday, August 2**
(10 day program)
Registration Deadline: Tuesday, July 9
- **"F" Monday, August 5-Friday, August 9**
(5 day program)
Registration Deadline: Tuesday, July 16
- **"G" Monday, August 12-Friday, August 16**
(5 day program)
Registration Deadline: Tuesday, July 23

BEFORE SCHOOL

During the weeks of the Whitnall School District's Summer School program, this option is for an hour of summer playground from 7:30-8:30 AM daily Monday through Friday. Children may NOT be dropped off prior to 7:30 AM. Playground staff will escort to summer school at 8:30 AM.



PLAYGROUNDS PLUS

This site runs from 8:00 AM-5:00 PM daily. Parents may drop off as early as 7:30 AM and pick up as late as 5:30 PM.

SCHOOL'S OUT

As part of our cooperative programming effort with the Whitnall School District's summer school program, this is an after summer school program at Whitnall Middle School. Staff will meet students upon dismissal and escort to the playground program. If your child is not attending the summer school program, they are still welcome to enroll for an afternoon of fun. Parents may pick up as late as 5:30 PM.



Whitnall Middle School	"A" Session	"B" Session	"C" Session	"DE" Session	"F" Session	"G" Session
Before School 7:30-8:30 AM	305207-A5 \$25 (R) / \$37 (NR)	Not available	Not available	Not available	Not available	Not available
Playgrounds Plus 8:00 AM-5:00 PM 	305207-A1 \$225 (R) / \$337 (NR)	305207-B1 \$67 (R) / \$100 (NR)	305207-C1 \$225 (R) / \$337 (NR)	305207-DE1 \$225 (R) / \$337 (NR)	305207-F1 \$113 (R) / \$169 (NR)	305207-G1 \$113 (R) / \$169 (NR)
School's Out 11:30 AM-5:00 PM 	305207-A2 \$139 (R) / \$208 (NR)	305207-B2 \$42 (R) / \$63 (NR)	305207-C2 \$139 (R) / \$208 (NR)	305207-DE2 \$139 (R) / \$208 (NR)	305207-F2 \$69 (R) / \$113 (NR)	305207-G2 \$69 (R) / \$113 (NR)
American Red Cross Learn to Swim*	Pool closed	Pool closed	Pool closed	Pool closed	Pool closed	Pool closed
Open Swim*	Pool closed	Pool closed	Pool closed	Pool closed	Pool closed	Pool closed

(*) Whitnall High School pool is closed for maintenance. No Learn to Swim or Open Swim this summer. These programs will return in 2020.

- Refer to the General Information section / Code of Conduct.
- Each participant should bring their own bag lunch and beverage daily.
- Program fee includes the "all site special events and field trips". Further details will be available in your site newsletter.

GREENFIELD SCHOOL DISTRICT PLAYGROUNDS

2019-2020 School Year — Youth (Entering K5-6th Grades)

-REGISTRATION DEADLINE-

Registrations after this date will only be accepted if there is space available and will incur a \$15 late fee.



Monday-Friday Program

- "A" Monday, June 17-Monday, June 24 (6 day program)
Registration Deadline: Tuesday, June 4
- "B" Tuesday, June 25-Wednesday, July 3 (7 day program)
Greenfield Summer School
Registration Deadline: Tuesday, June 11
- "C" Monday, July 8-Friday, July 19 (10 day program)
Greenfield Summer School
Registration Deadline: Tuesday, June 25
- "D" Monday, July 22-Wednesday, July 31 (8 day program)
Greenfield Summer School
Registration Deadline: Tuesday, July 9
- "E" Thursday, August 1-Friday, August 2 (2 day program)
Registration Deadline: Tuesday, July 23

SCHOOL'S OUT

As part of our cooperative programming effort, this playground program takes place after the Greenfield School District's summer school program. While our program ends at 5:00 PM, parents may pick up as late as 5:30 PM.

PLAYGROUNDS PLUS

This site runs from 8:00 AM-5:00 PM daily. Parents may drop off as early as 7:30 AM and pick up as late as 5:30 PM.

BEFORE SCHOOL

During the weeks of the Greenfield School District's summer school program, this option is for one and a half hours of summer playground from 6:30-8:00 AM daily. Children may not be dropped off prior to 6:30 AM.

(R)=Resident / (NR)=Non-Resident

Maple Grove Elementary School 6921 W. Cold Spring Road	"A" Session	"B" Session	"C" Session	"D" Session	"E" Session
Before School 6:30-8:00 AM	Not Available	305203-B1 \$26 (R) \$39 (NR)	305203-C1 \$37 (R) \$56 (NR)	305203-D1 \$30 (R) \$45 (NR)	Not Available
Playground Plus 8:00 AM-5:00 PM	305203-A2 \$135 (R) \$202 (NR)	Not Available	Not Available	Not Available	305203-E2 \$45 (R) \$67 (NR)
School's Out Noon-5:00 PM	305203-A3 \$77 (R) \$115 (NR)	305203-B3 \$89 (R) \$133 (NR)	305203-C3 \$128 (R) \$192 (NR)	305203-D3 \$102 (R) \$153 (NR)	305203-E3 \$25 (R) \$37 (NR)

EDGEWOOD ELEMENTARY/KONKEL PARK SITE

(2019-2020 School Year - Entering K5-6)

Just when you think the summer playground program is done, it is time for two weeks at Edgewood/Konkel Park. End your summer with two weeks of playground group games, arts and crafts, exploring Konkel Park, field trips and more. Parents will be able to drop off at Edgewood school each morning, with the kids then walking over to the Konkel South Shelter (weather permitting) for the afternoon where parents will pick up. Participants need to bring sunscreen, bug spray, a bag lunch, snacks, beverages and a water bottle daily. Enrollment will be limited, so register early for this site as we have reached max enrollment in past years.

ALL DAY PROGRAM —Our all-day option runs from 8:00 AM-5:00 PM. Parents may drop off as early as 7:30 AM and pick up as late as 5:30 PM.

Monday-Friday 8:00 AM-5:00 PM at Edgewood Elementary/Konkel Park

- "F" Monday, August 5-Friday, August 9 (5 day program / 1 field trip)
\$113 (R) / \$169 (NR) **305209-F1**
Registration Deadline: Tuesday, July 16
- "G" Monday, August 12-Friday, August 16 (5 day program / 1 field trip)
\$113 (R) / \$169 (NR) **305209-G1**
Registration Deadline: Tuesday, July 23



PLAYGROUND/ADVENTURE POLICIES

ARRIVAL/PICK-UP

Children may not be dropped off prior to the stated times. This is a safety issue, since everyone dropped off needs to be supervised and our staff will not be there yet. Children also need to be picked up no later than the 5:30 PM time. Late pick-ups take our staff away from other programs.

If a child is repeatedly dropped off early or picked up late, you may be charged for our staff time and your child dropped from the program.

DROP-IN VISITORS

All participants must be registered. As of Summer 2016, drop-ins are no longer accepted.

MEDICATIONS

Park and Recreation Department staff members are not allowed to provide medications for any participant. If your child needs assistance during the day, you will need to make other arrangements to provide that assistance.

PROPER ATTIRE

Participants are required to dress appropriately for these activities—sneakers, socks, shorts, and T-shirts are fine. Sunscreen/sun block should be applied prior to coming and some should be sent along with your child to apply during the day. Sandals and Jelly shoes are not allowed for safety reasons. Good clothes are not recommended because arts & crafts and game activities can get messy. For supervision reasons, participants MUST wear their Greenfield Playground T-shirt on the days of field trips.

PROGRAM FEES

The program fee indicated is for the total session. Sorry, fees can't be pro-rated. The fee breaks down to an average of \$2.15 per hour for School Age. Non-residents of Greenfield who are residents of the Whitnall School District may enroll in the playground program at the Whitnall Middle School and pay the resident fee.

(R) = Resident (Greenfield resident or Whitnall School District resident and/or attending a Greenfield or Whitnall School District public school.)

Playgrounds are NOT a licensed day care.

The playground program is not required to be a licensed day care.

The purpose of playgrounds — is to provide a variety of activities on a daily basis. A typical schedule will include group games in the gym, arts & crafts, board games, and team sports outside, as well as time to socialize and have fun with friends.

Parents should check with their tax preparer as this program might be eligible for child care deduction on your taxes.

This program might also qualify under your employer Flex Spending as a child care expense, check with your plan administrator.

Save your program receipt for documentation.

Program receipts and year end childcare statements can also be downloaded when you log into our online registration website. Our tax ID will be printed on your receipt.

Use the registration form found on page 5 to register for recreation activities listed on pages 2-4. Register for Whitnall and Greenfield Summer School Programs separately at the respective district.

NEW! SUMMER ADVENTURE FUN WEEKS

Melanie Giammarco, Program Coordinator

Come and flock on down for a half day of themed creative fun! Our program leaders are skilled in creativity (and standing on one leg) to offer you crafts, games and other activities to bring our theme to life each week. Make your friends pink with envy over how much fun you are having each week! Or better yet, they should sign up and join our flamboyance!

The purpose is to give children the opportunity to participate in fun, educational activities during the summer months while socializing and making friends.

Children must meet the age on or before the first day of the program. It is expected that they be able to provide self-care in a group setting (able to use rest room facilities independently, wash hands, and control their behavior while participating in these activities).

This program may qualify as a child care deduction on your taxes, check with your tax preparer. This program may also qualify under your employer Flex Spending as a child care expense, check with your plan administrator. Min. enrollment: 15 | Max. enrollment: Ages 4-5=20, Ages 6-8=25

FAIRY TALES

Once Upon a Time... do you believe in your imagination? You will become a princess or prince and make friends with magical creatures in special fairy tale fun. From games to crafts, this week will be filled with creativity. On Friday, we will have a great ball just like Cinderella. Come on a trip to a time when anything was possible, if only you believe!

Monday-Friday / 5 Sessions **June 17-21**
 Ages 4-5 8:30 AM-Noon **305150-A1**
 Ages 6-8 12:30-4:00 PM **305150-A2**
 Oakley Fisher Center
 Per option: \$69 (R) / \$103 (NR)
 Time Out: Tuesday, June 4

GYMNASTICS

Tumble, learn and explore the world of gymnastics! In this camp, you will learn the basic movements of marching, rolling and hanging on the bar! Balance skills will grow with the challenges of the balance beam. This is a great place to be introduced to our fun Kidnastics program and expand your movement skills.

Monday-Friday / 5 Sessions **June 24-28**
 Ages 4-5 8:30 AM-Noon **305150-B1**
 Ages 6-8 12:30-4:00 PM **305150-B2**
 Oakley Fisher Center
 Per option: \$60 (R) / \$90 (NR)
 Time Out: Tuesday, June 11

Monday-Friday / 5 Sessions **August 5-9**
 Ages 4-5 8:30 AM-Noon **305150-H1**
 Ages 6-8 12:30-4:00 PM **305150-H2**
 Oakley Fisher Center
 Per option: \$60 (R) / \$90 (NR)
 Time Out: Tuesday, July 23

BIRTHDAY CELEBRATIONS

Who doesn't love a birthday? Help us celebrate the birth of our nation during BIRTHDAY WEEK! Come celebrate all week as we celebrate our own birthdays, no matter what time of year it is! Our special week will conclude with a big celebration for America's 242nd Birthday!

Monday-Wednesday / 3 Sessions **July 1-3**
 Ages 4-5 8:30 AM-Noon **305150-C1**
 Ages 6-8 12:30-4:00 PM **305150-C2**
 Oakley Fisher Center
 Per option: \$44 (R) / \$66 (NR)
 Time Out: Tuesday, June 11

GET ART SMART

Discover the world of art through a variety of mediums this week! We will touch on colors, patience of staying inside the lines, and strengthening the skills of fine motor movements through the power of art. Come explore charcoal, pencil, oil pastels and clay!
 ** Please understand this week will be MESSY. Make sure your child is ready to have fun, but be prepared for a possible mess!

Monday-Friday / 5 Sessions **July 8-12**
 Ages 4-5 8:30 AM-Noon **305150-D1**
 Ages 6-8 12:30-4:00 PM **305150-D2**
 Oakley Fisher Center
 Per option: \$64 (R) / \$96 (NR)
 Time Out: Tuesday, June 25

OAKLEY FISHER CENTER

5475 W Abbott Ave (located in the Spectrum Cable building). Take Loomis Road, between Grange and Edgerton Aves and enter at the Kindercare building. Take the access road immediately to the right to the west side of the building. Parents may wait in the small lobby area. Please note there are designated parking spots.

SUPERHEROES

It is time... time to SAVE THE WORLD! This week come explore the world of superheroes. Join your favorite superheroes to fight the villains! At the end of this week, your favorite superheroes may just show up to show their gratitude... but only if you complete your mission first!

Monday-Friday / 5 Sessions **July 15-19**
 Ages 4-5 8:30 AM-Noon **305150-E1**
 Ages 6-8 12:30-4:00 PM **305150-E2**
 Oakley Fisher Center
 Per option: \$69 (R) / \$103 (NR)
 Time Out: Tuesday, July 2

UNDER THE SEA

Did you know that humans know more about outer space than our own oceans? Explore the depths of the ocean and learn all about the ocean life that reside in the unknown. Find out how coral is a living creature and how fish can survive 26,000 feet (or about 5 miles) below the surface!

Monday-Friday / 5 Sessions **July 22-26**
 Ages 4-5 8:30 AM-Noon **305150-F1**
 Ages 6-8 12:30-4:00 PM **305150-F2**
 Oakley Fisher Center
 Per option: \$64 (R) / \$96 (NR)
 Time Out: Tuesday, July 9

AROUND THE WORLD ADVENTURES

Around the world in 5 days! Explore various areas of the world throughout a week-long trip! Discover games and activities that kids would play from other cultures. Each day you will "fly" to a new country to learn about and observe. Pack your bags for a trip of a lifetime!

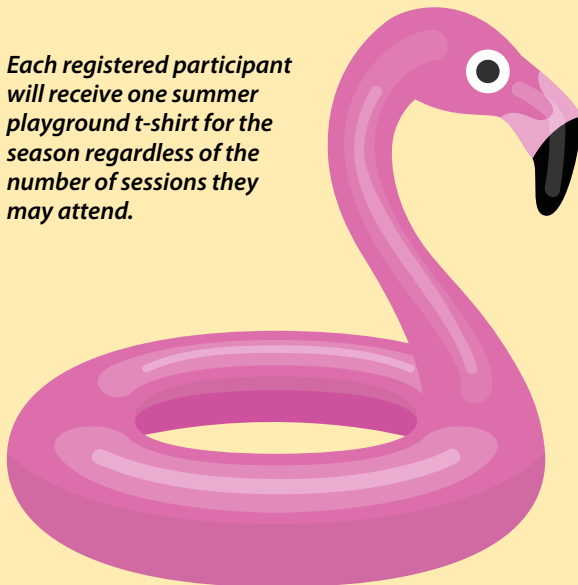
Monday-Friday / 5 Sessions **July 29-August 2**
 Ages 4-5 8:30 AM-Noon **305150-G1**
 Ages 6-8 12:30-4:00 PM **305150-G2**
 Oakley Fisher Center
 Per option: \$69 (R) / \$103 (NR)
 Time Out: Tuesday, July 16

SPLISH SPLASH

Let's end summer with a SPLASH! Join us for a week of exploring water. We will be doing science activities, games, and artwork – all with the common thread of water! On our last day, we will have a big water party to end our amazing summer!

Monday-Friday / 5 Sessions **August 12-16**
 Ages 4-5 8:30 AM-Noon **305150-J1**
 Ages 6-8 12:30-4:00 PM **305150-J2**
 Oakley Fisher Center
 Per option: \$69 (R) / \$103 (NR)
 Time Out: Tuesday, July 30

Each registered participant will receive one summer playground t-shirt for the season regardless of the number of sessions they may attend.



FREE FAMILY MOVIES

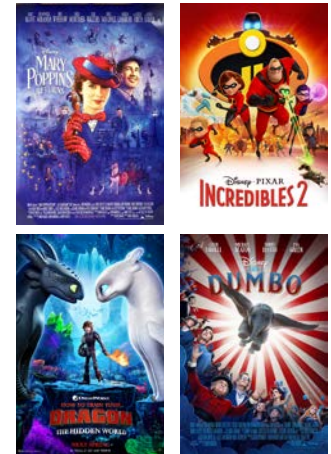
The Greenfield Parks & Recreation Department will be showing four family friendly films (G or PG rated) on our 16' screen—guaranteed fun for all ages. There is no better place to be this summer than **Konkel Park** (5151 W. Layton Ave.) by the **Amphitheater** watching movies under the stars. Free parking is available in the Konkel Park parking lot.

Saturday at dusk

Movies will start at dusk.

June/July/August movies at approximately 8:30 or 8:45 PM

September movie approximately 7:30 PM.



- June 29 - Mary Poppins Returns
- July 20 - The Incredibles 2
- August 17 - How to Train Your Dragon: The Hidden World
- September 14 - Dumbo

Please bring a chair or blanket to sit on and don't forget the bug spray.

(This is a FREE drop-in activity — no registration required!)

Weather cancellation information line (414) 297-9008

Presented by



ROUGH'N IT UNDER THE STARS!

Saturday-Sunday, June 29-30, 2019

(Rain or Shine)

Set-up 3:00 PM (Sat.) / Take down 9:00 AM (Sun.)

Konkel Park South

Nearby restrooms & parking (Edgerton to 51st) available. Enjoy the great outdoors without exactly roughing it! Experience nature, fresh air, the smell of the camp fire, movie (Mary Poppins Returns), and outdoor adventures. No need to travel far, it's right in your backyard!

(Greenfield residents only)

\$20 per family of five

311000-01

\$5 each additional person

311000-02

Use the registration form (page 5) to register. Be sure to note the names of all family members attending.

P.S. Don't forget to bring your toothbrush, blanket, pillow, bug spray, and that favorite stuffed animal.

Presented by



REGISTRATION FOR GREENFIELD PARKS & RECREATION PROGRAMS

See "6 Easy ways to Register" below for Greenfield Parks & Recreation programs noted on pages 2-4.

Simply complete the registration form below—if you are planning to **Mail-in** / use the **24 Hour Drop Box** / **Fax** / or **Walk In** options.

Be sure to double check for accuracy when completing the registration form (birth date is now required).

If you are registering **on-line through Rectrac**, you will need to create a household account before actually registering to verify residency status.

Upon approval, you will receive (via e-mail) a user name and password from our department.



POLICIES/PROCEDURES

WAITING LISTS

If you are unable to register for a program due to full enrollment capacity, you may request to have your name placed on a waiting list. There are no guarantees for placement. If any openings become available, we will refer to the waiting lists FIRST to fill programs. Waiting lists are kept for the current program season only.

CREDIT POLICY

If you desire or are forced (ie. injury) to discontinue participation in a program, the use of "credit" toward future participation is highly encouraged. The following guidelines will apply:

- A - The amount of applicable credit is based on the date/time of request (received in office).
- B - Credit transactions are not subject to service charges unless a future refund request is received for a previously "credited" program fee(s).
- C - Credit use is at the discretion of the payee.
- D - Credit can not be given for class/session absences.

REFUND POLICY

Refunds related to program fees will only be made in the following cases:

- A - Program is canceled by the department (100%).
- B - Change in the published day/time schedule of program by the department (100%)
- C - Cancellation by applicant
 - * Prior to start of the program, a full refund will be given minus a \$4 service fee.
 - * Prior to second half of the class/program, a 50% refund will be given minus a \$4 service fee.
 - * After first half of the program, no REFUND CAN BE GIVEN.

All refunds follow the City Finance Department bill paying schedule. There are no cash refunds given. All refunds are by city check and mailed to the payee indicated on the original registration form.

CANCELLATIONS

1. If unanticipated school educational or athletic programming forces program cancellation, all registered participants will be notified (email, note on receipt, phone call, etc.)
2. If inclement weather potentially forces program cancellations, all participants should call the 24 hour information line (414) 297-9008 to check on the status. If the program is being held at a Greendale location, please call the Greendale Park & Recreation 24 hour hotline at (414) 297-9365.
3. If you have not been informed through the information lines or contacted by the Department, assume your activity has not been cancelled.
4. If poor weather conditions develop within 90 minutes of the activity/event, report to the site if in doubt. Remember all sites are unique and activities may be conducted or modified.
5. Once at a program site, decisions concerning the cancellation or discontinuation of the activity will be in the judgment of the site supervisor/leader or game official.
6. Every attempt will be made to reschedule a cancelled activity. Notification will be given to program participants.

SIX E-Z WAYS TO REGISTER

MAIL-IN

Don't delay... mail today!

Mail your completed registration form, along with payment to:

Greenfield Parks & Recreation
7325 W. Forest Home, Room 200
Greenfield, WI 53220

24/7 DROP BOX

At your convenience, drop off your completed registration form and payment (no cash) in a sealed envelope marked Parks & Recreation Registration. The Drop Box is located at the Greenfield City Hall south entrance doors.

FAX

(414) 543-2369

Registrations by fax will be accepted **NOW**. Simply complete a registration form. Don't forget your credit card information. Confirmations will be mailed.

ON-LINE - FORM

NEW OPTION! Easy way to register if you don't have access to a fax machine.

- Go to www.ci.greenfield.wi.us/parksrec
- Click on the link for GPRD Registration Editable Form.
- Complete form and click submit.
- Credit card only.
- You will receive an email confirmation that your form has been submitted.
- You will receive your receipt separately.

ON-LINE - RECTRAC

Before you can register on-line, please create a **Household Account**.

- Go to www.ci.greenfield.wi.us/parksrec
- Scroll down & click WebTrac "On-line program registration"
- Go to "Account Log In"- click "Create an Account"
- Follow the step-by-step instructions.

Upon approval, you will receive (via e-mail) a user name and password from our department (allow 2-3 business days for approval), at which time you may proceed with program registrations. *Credit card only.* Your on-line transaction will serve as your confirmation... please print receipt for your records.

WALK-IN

Starts NOW — registration will be available in the Greenfield Parks & Recreation Office (City Hall, Room 200) Monday-Friday 8 AM-5 PM. Simply complete the registration form and include payment. Registrations will be processed daily. Confirmations will be mailed.



REGISTRATION FORM (Household)

PRIMARY HOUSEHOLD CONTACT INFORMATION

Name (Last) _____ (First) _____
 Address _____ APT # _____
 City _____ State _____ Zip _____
 Phone Primary () _____ - _____ Secondary () _____ - _____
 E-mail Address _____ Birth Date ___/___/___ () _____ - _____

Send Confirmation/Receipt via:

- E-mail Mail / Us Postal

- Resident (City of Greenfield)
 Non-Resident
 Non-Resident with children currently enrolled in the Greenfield or Whitnall School District.

Emergency Contact (Name & phone)
 To be used in an emergency—only if primary or secondary phone contacts are not available.

Participant Name (First & Last)	Birth Date	Program Title (Level)	Code # (8 digit)	Fee
<input type="checkbox"/> Female <input type="checkbox"/> Male	Month/Day/Year (Required)			\$
Special Considerations (i.e. medications, disabilities, allergies, etc.):		School & Grade (Youth Only)	T-Shirt Size (circle if applicable) Youth: S 6-8 M 10-12 L 14-16 Adult: S M L XL XXL	
Participant Name (First & Last)	Birth Date	Program Title (Level)	Code # (8 digit)	Fee
<input type="checkbox"/> Female <input type="checkbox"/> Male	Month/Day/Year (Required)			\$
Special Considerations (i.e. medications, disabilities, allergies, etc.):		School & Grade (Youth Only)	T-Shirt Size (circle if applicable) Youth: S 6-8 M 10-12 L 14-16 Adult: S M L XL XXL	
Participant Name (First & Last)	Birth Date	Program Title (Level)	Code # (8 digit)	Fee
<input type="checkbox"/> Female <input type="checkbox"/> Male	Month/Day/Year (Required)			\$
Special Considerations (i.e. medications, disabilities, allergies, etc.):		School & Grade (Youth Only)	T-Shirt Size (circle if applicable) Youth: S 6-8 M 10-12 L 14-16 Adult: S M L XL XXL	
Participant Name (First & Last)	Birth Date	Program Title (Level)	Code # (8 digit)	Fee
<input type="checkbox"/> Female <input type="checkbox"/> Male	Month/Day/Year (Required)			\$
Special Considerations (i.e. medications, disabilities, allergies, etc.):		School & Grade (Youth Only)	T-Shirt Size (circle if applicable) Youth: S 6-8 M 10-12 L 14-16 Adult: S M L XL XXL	

I, the undersigned or parent/guardian of the individuals named above, do hereby understand that I have registered the individual(s) named herein to participate in the aforementioned activity(ies) and I further agree to indemnify and hold harmless the City of Greenfield and its employees, officers and agents from and against any and all liability. In addition, I understand that the requested programs indicated above, like all activity, have some inherent risk involved. Furthermore, the individuals named herein are in good physical condition appropriate for the stated activity(ies) and that participants must assume full responsibility for injuries incurred while taking part in an activity. No accident insurance is provided by the City of Greenfield. I/We have read and agree to the registration and related department policies, including the right to use my or my child's photograph or image with or without my or my child's name, both single and in conjunction with other persons or objects for any and all purposes including, but not limited to, private or public presentations, advertising, publicity, and promotion relating thereto.

ALL ADULT PARTICIPANTS MUST SIGN BELOW.

IN ADDITION, THE SIGNATURE OF A PARENT OR LEGAL GUARDIAN IS REQUIRED FOR YOUTH.

- Participant over Age 18 Parent Legal Guardian

X _____
 Signature _____ Date _____
 X _____
 Signature _____ Date _____

Help Us Help You!

Please comment on ways we may serve you better (customer service, facility/program improvements, new programs, etc.):

Please check for completeness.

QUESTIONS? Call 329-5370 for assistance M-F 8AM-5PM.

Thank You!

"ROUND UP"
For Youth Recreation
 Rounding up your program fee helps provide financial assistance for those unable to afford the program fee for youth activities.

Total Fees \$ _____
 Credit \$ _____
 Sub Total \$ _____
 \$ _____
 Community Center Donation \$ _____
Total Amount \$ _____

Payment Method: (✓) Cash Gift Certificate
 Check (Payable to: **CITY OF GREENFIELD**) # _____
 Credit Card (circle) Exp. Date ___/___/___
 Card # _____
 Card Holder Name: _____
 Signature: X _____

Return To: Greenfield Parks & Recreation
 7325 West Forest Home Ave., Rm 200,
 Greenfield, WI 53220-3356
 FAX: (414) 543-2369

GENERAL INFORMATION

- **COURSES ARE OFFERED DEPENDENT UPON SUFFICIENT ENROLLMENT.**
Registration is on a first-come, first-serve basis. If more than one section of a class is offered due to high enrollment, you will be contacted for your time preference.
- **Parents/guardians must sign and date the registration form.** Incomplete registration forms cannot be accepted.
- **CLASS SIZE**—The minimum number of students for a class to be held is 18.
- To be considered a **resident**, you must be a resident of the Whitnall School District.
- **REFUND POLICY**—No cash refunds will be given unless a class is changed or cancelled by the Whitnall School District. Any other requests for a refund will be granted at the discretion of the Summer School Director. No refunds will be issued after classes begin.
- **PAYMENT MUST ACCOMPANY REGISTRATION.** Check payable to **Whitnall School District**. Registration fee is \$75 per session for non-residents.
- **-CHAPTER 220 STUDENTS**—Current Chapter 220 students can attend Milwaukee Public School's program. Call 475-8238 for information. Chapter 220 students are considered non-residents and must pay the non-resident fee if attending Whitnall's Summer School.
- **OPEN ENROLLMENT STUDENTS**—Current open enrollment students are considered residents.
- **TUITION ASSISTANCE** is available for students qualified for free and reduced lunch.
- **DEADLINE FOR REGISTRATION IS MAY 17.** You will receive confirmation in the mail as soon as possible after this date.
- **ABSENCES MUST BE CALLED IN DAILY (414) 525-8661** or you may pre-notify the summer school office of absences in writing.
- **TRANSPORTATION**—No transportation is provided. You are responsible to getting your child to and from summer school safely and **on time**.

The Whitnall School District does not discriminate on the basis of sex, race, national origin, ancestry, creed, pregnancy, marital or parental status, sexual orientation or physical, mental, emotional or learning disability or handicap as required by WI Statute 118.12.

ELEMENTARY OFFERINGS

June 17-June 28 (Monday-Friday) • 8:30 - 11:30 AM

Whitnall Middle School • 5025 South 116 Street, Greenfield, WI 53228

Fee: Resident \$10 / Non-Resident \$75 / 2 classes

ALL Whitnall COURSES ARE BASED ON STUDENTS GRADE FROM THE 2019-20 SCHOOL YEAR.

8:30-9:55 AM

Reading Boosters (Grade 2 or 3)

No matter if your child is a struggling reader, on level, or advanced, this class will focus on improving basic skills through creative activities and learning in a fun environment. Students will work at their own speed while getting the help they need to be a successful reader. Students will be broken into grade level classes.

Math Boosters (Grades 1, 4 or 5)

No matter if your child is struggling with math, on level, or advanced, this class will focus on improving basic skills through creative activities and learning in a fun environment based on the Everyday Math Program. Students will work at their own speed while getting the help they need to be successful with math. Students will be broken into grade level classes.

Ooey Goey Science (Grades 1 & 2)

Common household products will be used to explore cause and effect, change of state, and chemical reactions. Many activities will result in ooey goey treats.

Color Explosion (Grades 3-5)

This class will explore how artists use color in their art. We will use a variety of art materials including cut paper, printmaking, ceramics and more! Young artists will learn about color theory and leave with a wonderful collection of colorful artwork.

Bonkers for Balls (Grades 1-3)

Do you enjoy sports but not necessarily care about winning or losing? Bonkers for Balls is an exciting opportunity to play all different types of "ball" sports without the pressure! Anything with a ball, we'll play it. Basketball, soccer, fun dodgeball games and kickball are a few examples.

Lego Mindstorms (Grades 3-5)

Students will learn the mechanics of Legos as they explore the connection to principles in art, math and engineering. Students will work on projects including building a motorized car with Legos. Using computer software, students will be able to program their car to move. Enjoy the physics of construction of Legos in a new, fun way.

Chemistry in the Kitchen (Grades 3-5)

Students will participate in fun experiments utilizing common household items and learn about chemical reactions found in daily life.

10:00-11:30 AM

Math Boosters (Grade 2 or 3)

No matter if your child is struggling with math, on level, or advanced, this class will focus on improving basic skills through creative activities and learning in a fun environment based on the Everyday Math Program. Students will work at their own speed while getting the help they need to be successful with math. Students will be broken into grade level classes.

Reading Boosters (Grades 1, 4 or 5)

No matter if your child is a struggling reader, on level, or advanced, this class will focus on improving basic skills through creative activities and learning in a fun environment. Students will work at their own speed while getting the help they need to be a successful reader. Students will be broken into grade level classes.

Ooey Goey Science (Grades 1 & 2)

Common household products will be used to explore cause and effect, change of state and chemical reactions. Many activities will result in ooey goey treats.

Meet the Masters (Grades 1 & 2)

Students will have the opportunity to learn about various artists and the work they created. We will practice the styles and experiment with the media used by famous artists in fun and unique ways.

Fantastic Physical Fun (Grades 3-5)

Join us as we participate in indoor and outdoor games and sports activities that will keep you active, fit and smiling. There will be something for everyone, so come on out and let's get moving.

Lego Mindstorms (Grades 3-5)

Students will learn the mechanics of Legos as they explore the connection to principles in art, math and engineering. Students will work on projects including building a motorized car with Legos. Using computer software, students will be able to program their car to move. Enjoy the physics of construction of Legos in a new, fun way.

Crime Scene Detectives (Grades 4-8)

Students will investigate forensic science via computers, analyze fingerprints and handwriting and use the scientific process to solve fictional crimes and mysteries. Detectives will be engaged in activities to recreate the crime scenes, gather evidence, compare findings and write brief reports to solve each case. **(This is a repeat of last year's class.)**



EARLY ELEMENTARY OFFERINGS

Introduction to 5-Year-Old Kindergarten
June 17-June 28 (Monday-Friday) 8:30-11:30 AM
Whitnall Middle School
5025 South 116 Street • Greenfield, WI
Fee: Resident \$10 / Non-Resident \$75

This class is offered to children eligible to attend 5 Year Old Kindergarten in the Fall of 2019. Your child must be 5 years of age on or before September 1, 2019 and a birth certificate will be required to register if they are not already enrolled for Fall. This class will provide children the experience of a kindergarten environment. Children will experience attending large group activities, small group activities including early math and reading skills, art projects and center time. They will learn about taking turns, sharing, following a routine, large and fine motor activities and being responsible for their actions.

Transition to 1st Grade
June 17-June 28 (Monday-Friday) 8:30-11:30 AM
Whitnall Middle School
5025 South 116 Street • Greenfield, WI
Fee: Resident \$10 / Non-Resident \$75

This class is offered to children eligible to attend 1st grade in the Fall of 2019. Children will prepare for 1st grade through an emphasis on reading and writing in workshop formats. Math skills will be reinforced using manipulatives, skill builders and games.



MIDDLE SCHOOL OFFERINGS

June 17-June 28 (Monday-Friday)
Whitnall Middle School (5025 South 116th Street, Greenfield)

Transition to Middle School 8:30-11:30 AM
Fee: Resident \$10 (Whitnall Students Only)

This class will help 5th grade students become acquainted with middle school life. Students will work on organizational skills, test taking skills and conquering lockers while making new friends from the other elementary school.

Ceramics (Grades 6 & up) 8:30-9:50 AM
Fee: Resident \$20 / Non-Resident \$75

This ceramics class will introduce students to a variety of hand-building techniques including coil and slab construction. We will create both decorative and functional items, such as cups, plates, and bowls. Once glazed and fired, you will be able to eat and drink out of the items you make!

Printmaking (Grades 6 & up) 10:00-11:30 AM
Fee: Resident \$20 / Non-Resident \$75

We will use a variety of printmaking techniques, including stamping, block printing, screen printing and cyanotype (*photographic process that creates blue and white images*). You will have the opportunity to create your own fabric, print a custom t-shirt, make a book and more!



K-8 SUMMER LEARNING PROGRAM

Student placement for summer school is based on your child's grade level for the 2019-2020 school year.



REGISTER FOR GREENFIELD SUMMER LEARNING PROGRAM AT GREENFIELD SCHOOL DISTRICT!

The School District of Greenfield Summer Learning Program is available at **no charge** to Greenfield residents, and current Open Enrollment and Chapter 220 students registered to attend the School District of Greenfield in the Fall of 2019

Summer School Registration:
April 25th at 4:00 pm – June 3rd at 4:00 pm
 Registration for elementary and middle grades summer school will not be accepted after June 3rd at 4:00 pm and all classes will be filled on a first come, first serve basis so you are encouraged to register early.

More information about how to register will be included with the class brochure that will come home with students in late March.

ELEMENTARY PROGRAM (GRADES K-6)

Tuesday, June 25th – Wednesday, July 31st

(No School July 4th & 5th)

Maple Grove Elementary School 8:00 AM-Noon

6921 W. Cold Spring Rd. • Greenfield, WI 53220

This year the School District of Greenfield Elementary Summer School Program will be getting a new look! We are excited to announce that we will be offering an array of engaging classes for students entering kindergarten through 6th grade. Are you an aspiring chef or artist? Would you like go on adventures through national parks or around the world? Do you like to build, play and create? If so, come join us for summer school and experience learning and fun all in one!

Elementary Summer School and Greenfield Parks and Recreation Before School and School's Out Program

Students attending elementary summer school are invited to participate in the Before School Program from 6:30 a.m. – 8:00 a.m. and/or the School's Out Program in the afternoon from 12:00 p.m. – 5:00 p.m. Both programs will be located at **Maple Grove Elementary School** and are offered through Greenfield Parks and Recreation for an additional fee. Additional information can be found in the the Recreator Summer Edition and/or on the Greenfield Parks and Recreation website:
<http://www.ci.greenfield.wi.us/parksrec>



Summer Meals for Kids and Teens

Free lunch is available to all children in the community 18 years or younger at Maple Grove Elementary School from June 25th to July 31st (no meal service on weekends and July 4th/July 5th). The meal program is open to the public from 11:30 am -12:00 pm. Adult price is \$3.55. If you have questions regarding this program, please call Greenfield Food Service at 414-281-3357.



MIDDLE SCHOOL PROGRAM (GRADES 7-8)

Monday, July 8th – Wednesday, July 31st

(No School July 4th & 5th)

Greenfield High School 8:00 AM – Noon

4800 S 60th St., Greenfield, WI 53220

(414)-281-6200

Students entering grades 7 and 8 are encouraged to register for two classes (8-10 a.m. and 10 a.m.-12 p.m.) this summer. Students may select a Reading and Writing experience, engage in Engineering skills, put their minds to work in Mathematics or participate in Wellness in Action! All sessions will be held at Greenfield High School. Transportation is available with payment to First Student Bus Company.

Information regarding specific summer school class offerings and registration details will be shared later this month. This information will be sent by e-mail. Summer school information can also be found on our District website (www.greenfield.k12.wi.us) under the District tab then click *Curriculum, Assessment & Instruction*.



Please join us for our **SUMMER SCHOOL OPEN HOUSE** on **Thursday, April 25th • 4:00-6:00 pm** at the **Greenfield Public Library Community Room** to learn more about summer school and register your child.



Every Sunday

May 5 - October 27

10:00 am - 2:00 pm

Konkel Park

5151 W. Layton Ave. | Greenfield, WI

Makers Market hosted the first Sunday of every month featuring crafts, artisans, and handmade goods.

Live Music | Fresh Produce | Bakery
 Meat | Dairy | Specialty Items
 Ready-To-Eat Foods

Closed Memorial Day Weekend.

Follow us on Facebook
[GreenfieldWIFarmersMarket](https://www.facebook.com/GreenfieldWIFarmersMarket)

www.greenfieldwifarmersmarket.com



Major Sponsor:

Clement Manor



Clean up litter and help keep the City of Greenfield Clean and Green!

Saturday, May 18, 2019

Check-in & Supply Pick-up: 9-10:30 am

Konkel Park

5151 W. Layton Ave.

Sign up to join Clean Up Day...

- Earn coupons for a day at the Zoo or County Pools
- FREE litter bags



Held in cooperation with **Keep Greater Milwaukee Beautiful**
 Joan Stevens, City of Greenfield Chairman

Note: No hazardous waste, oil, or yard waste please.

To register and find out date and time visit our website at:

www.ci.greenfield.wi.us/parksrec

For more information call Greenfield Parks and Recreation (414) 329-5370

COMMUNITY EVENTS



Konkel Park
(5151 W. Layton Ave, Greenfield)

Thursday, May 23	
7-10 PM	The Cheap Shots with special guests the Hot and Dirty Horn Section
Friday, May 24	
7:30 PM	Rebel Grace
Saturday, May 25	
2-6 PM	The Oldies But Goodies Spectacular Band
5-6 PM	The Real Clowns Magic & Music Mayhem
7-11 PM	Cherry Pie
9 PM	Fireworks
Sunday, May 26	
9 AM-2 PM	Car Show Hosted by MAD
10:30 AM-Noon	The City's Best Zumba Fitness Party
2-6 PM	The Doo Wop Daddies
2 PM	Face Painting and Airbrush Tattoo
8-11 PM	Bella Cain

Carnival rides each day. See website for times and deals.

For a full list of events visit www.jansenfest.org

Proceeds to benefit the City of Greenfield Parks Department



www.gfjuly4.com

SCHEDULE (Times are approximations)	
11:00 AM	Festival Grounds/Vendors Open
11:30 AM	Bike Decorating Contest (Shorewest Realtors Parking Lot, 6725 W. Layton Ave.)
12:15 PM	PARADE (Route — 68th St. & Layton Ave to Konkel Park)
1:30 PM	Opening Ceremony
1:45 PM	BP Paul's Ice Cream Giveaway (while supplies last)
1:50 PM	UW Marching Band Performance
2:00-5:00 PM	Additional Community Events
4:00 PM	Mini, Little, and Junior Miss Greenfield Pageant
Evening	Live Music by The Now
9:45 PM	FIREWORKS
11:00 PM	Festival Ends

Thursday, July 4, 2019

11:00 AM-11:00 PM

Konkel Park

5151 W. Layton Ave. Greenfield



2019 Summer Billboard



Konkel Park • 5151 W. Layton Ave. Greenfield

TUESDAYS 6:00 - 8:30 pm	BREWS AND BITES CONCERT SERIES	The series will feature one craft brewery each week and food vendors.
	June 18	The Cheap Shots (Rock/Variety of Hits)
	June 25	The Blues Disciples (Blues)
	July 9	Ted Oliver's Dueling Pianos (Hits/Requests)
	July 16	Bobby Way Duo (Oldies)
	July 23	FM Rodeo (Country)
	July 30	Foolhouse (90's Dance Music)
	Aug. 13	Listening Party (Americana/Folk)
	Aug. 20	The Britins (Beatles Tribute)
	THURSDAYS 11:30 am - 1:00 pm	PICNIC IN THE PARK
July 11		Bob Kann "An Outrageously Good Time"
July 25		Fox & Branch Music
Aug. 8		Great Scott "It Must Be Magic"
Aug. 22		Ms. Jen & the Jellyfish
FRIDAYS 5:00 - 10:00 pm	LIVE! @ THE AMP	Food vendors as well as a variety of beverages at the AMP Haus
	July 19	80's Night! Random Maxx (Opener) The Glam Band (Headliner)
	Aug. 23	Country Night! Zac Matthews Band (Opener) Saving Savannah (Headliner)
SATURDAYS	MOVIES in the PARK	Presenting Sponsor: WATERSTONE BANK
	June 29	Mary Poppins Returns
	July 20	Incredibles 2
	Aug. 17	How to Train Your Dragon: The Hidden World
	Sep. 14	Dumbo
	City of Greenfield CAR SHOW	September 7th • Noon - 4:00 PM City of Greenfield Car Show More info & registration: www.ci.greenfield.wi.us/parksrec
	Fall FAMILY FEST	Presenting Sponsor: THE RIDGE COMMUNITY CHURCH October 5th 10:00 AM - 4:00 PM Fall Family Fest & Trick or Trot Run/Walk Free family friendly event featuring various children's activities, children's entertainment, and food vendors. www.trickortrot.5k.run

NEVER FORGET

THE MOVING WALL
Vietnam Veterans Memorial
GREENFIELD 2019

The
VIETNAM MOVING WALL

OPEN 24 HOURS
MAY 23, 2:00 PM-MAY 27, 4:00 PM
Konkel Park
5151 W. Layton Avenue • Greenfield, WI

To become a sponsor or to volunteer, contact us at greenfieldvmw@gmail.com or call Julie Rome 414-759-5751 or Michelle Haash 414-614-7552.

www.ci.greenfield.wi.us
www.themovingwall.org
www.jansenfest.org