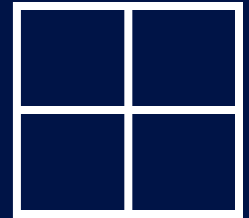


# THE WHITNALL WINDOW

WINTER 2019



1 SUPERINTENDENT'S MESSAGE 2 UNIQUE STORIES 3 STUDENT ACHIEVEMENT  
4 FACILITIES 5 A NEW TRADITION 6 EVENTS 7 PHOTOS 8 BACK COVER

## THE SUPERINTENDENT'S MESSAGE

In our last issue, we shared the progress of our continuous improvement work. Specifically, we introduced our strategic plan focus areas: student achievement, unified culture, engagement, and financial and operational excellence. We are working towards improvement in all of these areas, but the work related to student achievement is the most exciting and tangible thus far. At the district level, our student achievement work is currently focused on developing and delivering a comprehensive K-12 curriculum; this will ensure that all students are accessing necessary skills and content. At the building level, our student achievement work is currently focused on implementing some robust literacy and math goals. We are developing a district dashboard, which will allow our community to monitor our continuous improvement progress. We plan to share the dashboard later this spring.



Also shared in our last issue was our updated prospectus, featuring a passion statement around embracing the unique stories in our district. This passion is embedded in our work. Meet those we serve where they are. Prepare them to go where they want to go. Now that we have begun embracing the unique stories in our district, we are excited to begin sharing them with all of you. In this issue, we are introducing our Unique Stories series, a collection of profiles from throughout the Whitnall community. Our first two are on the second page of this newsletter! If you know someone within the Whitnall community that has a unique story, please let us know. We would love to share.

This issue of the Whitnall Window also features our new electives pathway, some recent building and district events, and our plans for our facilities, which include an exciting cafeteria remodel. And be sure to check the back cover for information about the upcoming school board election!

*Lisa L. Olson*

Dr. Lisa L. Olson, Superintendent

#whitnALLIN

## AMELIA | GRADE 12

"I am a proud second generation American. I am the daughter of two parents who immigrated from The Philippines. Both of my parents are hard-working and dedicated nurses who taught me from a very young age that it is imperative to help others in any way that you can.

One way to help others is by being a leader. My dad is a director for Pathfinder (which is essentially co-ed scouts). Throughout the years, I have helped him run activities and stay organized, picking up leadership skills along the way. He has jokingly called me his "secretary." But now, I am leading myself. I have become a teen leader for Pathfinder and the youngest organizer at my church. I have organized youth group visits to nursing homes, where we sing and talk with the residents. I have also participated in highway cleanup and have helped out with a number of free health clinics through the Filipino-American Association of Wisconsin (FAAWIS).



Learning about and engaging with my Filipino heritage is very important to me. In efforts to Americanize, I was not raised speaking Spanish (or Tagalog, the main Filipino dialect). Therefore, I have been studying Spanish and learning about where my family came from. I have traveled to the Philippines and have joined FAAWIS, participating in things such as the Holiday Folk Fair as a cultural dancer and dance teacher. I am also interested in other cultures. Through traveling and working with/hosting a number of foreign exchange students, I discovered that I was passionate about our global community. I have been accepted to UW-Madison and plan to study international studies with a minor in political science. I am excited about the possibility of specializing in global security, which focuses on causes of and solutions to political crises, violent conflicts, and human rights challenges. Following this, I plan on going to law school for international law. Although my plans are different from what my parents have done, I am driven by the same passion for helping others.

At Whitnall High School, I am the president of the National Honor Society, the student council secretary, and an officer for AFS Intercultural Programs. The primary purpose of my involvement is to make sure that Whitnall students feel like they're valued and that they truly do contribute to the school culture. No matter where you come from, I believe that it's important to know that you are welcome in our school. In my free time, I enjoy reading, writing, music, painting, photography, cooking, and travel.

Belonging to a fairly small minority in this part of America, I often find myself feeling trapped between American and Asian cultures. I am doing my best to honor both. I have faced some racial discrimination in my life, which has fueled my desire to learn about and work against injustice throughout the world. I believe strongly in equity and compassion, and I will strive to uphold those morals as I go forward in life."

## DAN RATHMANN | WHS EDUCATOR

"I am a Whitnall graduate (Class of 2007!) and, now, I am a Whitnall teacher. I followed in my mother's footsteps. My mother (Diana Rathmann) worked at Edgerton Elementary for over eighteen years. My journey to becoming a science teacher at Whitnall High School was unconventional; I never thought that I would end up teaching, let alone teaching at my old high school, rubbing shoulders with my mother's colleagues and friends.



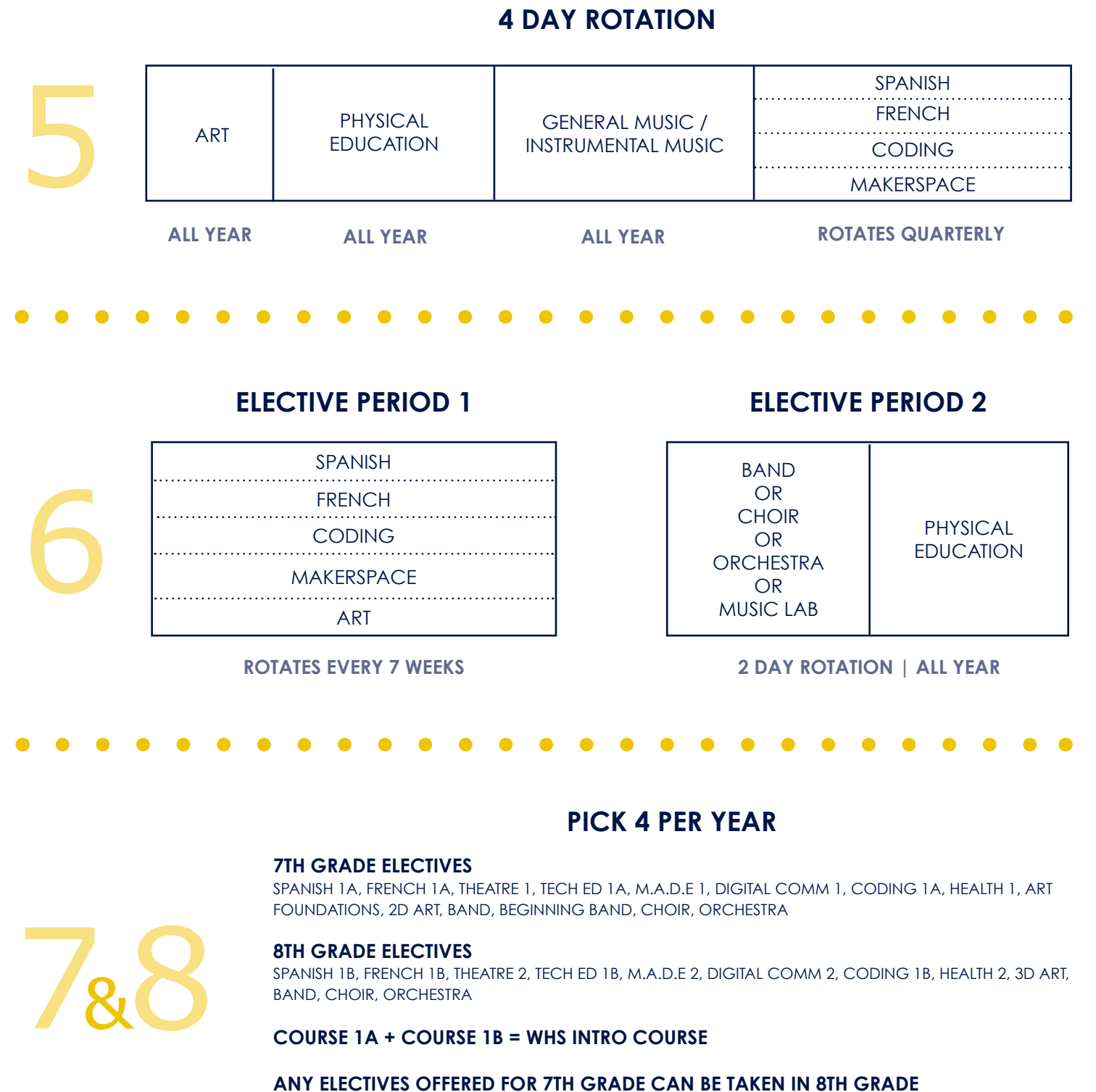
After high school, I went to UW-Oshkosh to pursue a degree in social work. While there, I got a job working for Science Outreach, a community science education program that does chemistry demonstration shows, planetarium viewings, and science competitions for schools. I began investing more time and energy in Science Outreach than in my assignments, papers, and tests for my social work degree. Looking back, this was the first sign that my true passion was science education.

When I left Oshkosh, I worked for a social work company called Options For Community Growth. During that time, I traveled to various places to volunteer. One of the first places I traveled to was Haiti. There, I volunteered at an orphanage for disabled children and at a hospital for sick and abandoned babies. Haiti taught me to be grateful for what I have and deepened my love for people. After this trip, I went to Costa Rica. While there, I helped children in a local school. I remember feeling that I somehow belonged there, even though my Spanish was subpar.

When I came back to the States and had time to reflect on my experiences, I decided to go back to school to get a teaching degree. During this time, my mother was diagnosed with stage 4 cancer. When I found out that I was going to be teaching at Whitnall, my mother was over the moon. It seemed like my journey to becoming a teacher was completely confirmed by her screaming with excitement into the phone. She gave so much to this community, and I hope to do the same."

## NEW ELECTIVES PATHWAY FOR GRADES 5-8

The Whitnall School District continues to create pathways for learning. Our new electives pathway for grades 5 through 8 will better prepare students to make informed elective choices. Offering exploratory learning experiences in 5th grade and 6th grade will allow students to make course selections with more confidence and excitement for 7th grade and beyond. The new electives pathway will begin with the 2020-2021 school year.





## 10 Year Capital Improvement Plan

With the conclusion of the referendum work this fall, Whitnall School District is in the midst of creating a new 10-Year Capital Improvement Plan. The intention of the plan is to recognize yearly maintenance projects to our buildings and grounds, identify projects of instructional value, and stay ahead of equipment cycles based on age and working condition of the equipment. We are in the midst of prioritizing the projects based on a rubric of criteria and available funds. The plan will be presented to the board in March for possible approval.

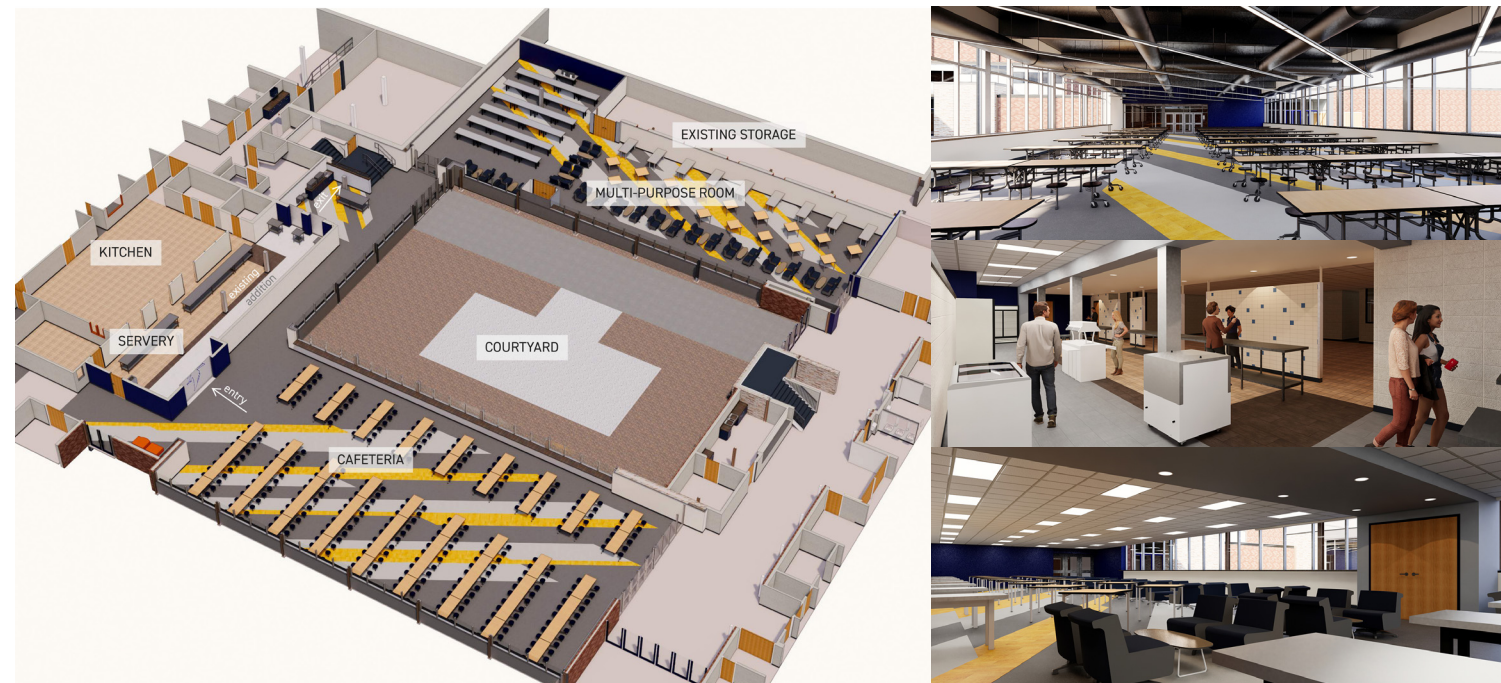
## WHS Cafeteria and Multipurpose Room

This past summer, the board toured the high school cafeteria as well as the former special services offices in order to assess the structural and logistical issues with the spaces. With the cafeteria walls structurally failing, limited capacity to create flexible scheduling for our students, and special services offices that were “gutted” in order to solve flooding issues, it became apparent that work needed to be performed. In the fall, the board carefully planned in order to provide financial flexibility for the project. With the referendum projects completed, we have worked with Bray Architects and CG Schmidt to design long term solutions for the spaces. There are several long term goals that we will accomplish with the updated spaces. These include:

- Shifting the high school from three lunch periods to two lunch periods for greater flexibility in scheduling
- Creating a multipurpose space for additional capacity, new learning spaces, and new community event spaces
- Developing a usable and sustainable outdoor courtyard space
- Completing infrastructure updates (failing exterior walls, roofing, HVAC units, etc.)

The project will be funded with operational dollars. This means that all funds will come from within Whitnall’s revenue limits provided by the state. There is the possibility of using remaining referendum dollars from the projects this past year that are coming in under budget. Dollars from the referendum would be used on the portion of the project dedicated to roof or infrastructure updates, per the referendum question posed to the public. However, the final financial results will not occur until late March or early April.

We will bid out all work this March, and we look forward to starting construction this spring. We are planning on being ready for occupancy by September 1, 2020. Bray Architects has provided us with renderings of the new design.



## THE WHITNALL HIGH SCHOOL EXPO

On February 7, the high school hosted its first ever Whitnall High School Expo! The goal of the event was to show parents, community members, and future students everything that Whitnall High School has to offer. The expo featured academics, activities, and athletics. There were performances, demonstrations, information booths, and interactive experiences. We received a lot of positive feedback, as well as some great suggestions for the future, and we look forward to enhancing and expanding the event. If you weren't able to attend this year, be sure to look out for next year's Whitnall High School Expo. This will be an annual event. Hooray for new traditions! Thank you to the parents, students, and community members who attended. And thank you to the teachers, advisors, and coaches who worked so hard to make this event a success. Below are some photos from that night.





# 6 | EVENTS

Whitnall Theatre performed **"100 Years of Broadway"** in January. It was an incredible show!



In November, Whitnall High School hosted **Trades Day**. Our high school students were joined by students from Franklin High School, Muskego High School, Greendale High School, Greenfield High School, and Whitnall Middle School. Attendees not only learned about a multitude of trades, but got to try them out! This was a great opportunity for our students; they got to connect with individuals with real-world experience, and they got to connect with students from other districts!



Throughout December, **the Whitnall Holiday Band Visited Local Senior Living Communities** and performed festive songs while dressed in their holiday best! The Whitnall Holiday Band features many Whitnall Middle School students!



This winter, **Our Fifth Graders Visited JA BizTown**, a fully interactive, simulated town. There, they got some hands-on experience in various jobs. They were journalists, mayors, trades workers, CEOs, and more! This was part of the new financial literacy program that our fifth graders are participating in this year. They've learned about financial institutions, savings and checking accounts, taxes, and credit cards. They even learned how to apply for a loan and how to write a check!



advancement      belonging      courage



**PROUD  
HISTORY  
BRIGHT  
FUTURE**



# THE WHITNALL WINDOW

Non-Profit  
Org  
U.S. Postage  
PAID  
Milwaukee,  
WI  
Permit No.1



Whitnall School District  
5000 S. 116th Street  
Greenfield, WI 53228  
414.525.8400  
www.whitnall.com

## WSD Board of Education

Jonathan Cagle | President | Hales Corners | Since 2014  
Quin Brunette | Vice-President | Greenfield | Since 2012  
Kevin Stachowiak | Clerk | Hales Corners | Since 2015  
Steven Butz | Treasurer | Greenfield | Since 2018  
Nancy Zaborowski | Member | Greenfield | Since 2008  
Jon Jones | Member | Franklin | Since 2014  
Karen Mikolainis | Member | Hales Corners | Since 2019



PLEASE CONSIDER ATTENDING OUR  
**SCHOOL BOARD CANDIDATE FORUM**  
MARCH 10 | 6:30 PM | COMMUNITY BOARD ROOM  
**AND BE SURE TO VOTE ON APRIL 7!**



Follow us on social media!



@whitnallschools for all three!