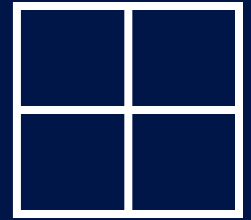


THE WHITNALL WINDOW

SPRING 2019



- 1 Superintendent's Message
- 2 Staff Spotlights 3 Student Spotlights
- 4 Facilities 5 Facilities & Mural
- 6 Roadmap 7 Winter Photos
- 8 Back Cover

THE SUPERINTENDENT'S MESSAGE

Happy Spring! Our school calendar has definitely been challenged by the weather this winter. Fortunately, the weather has not delayed our referendum construction. We are currently on schedule to have construction finished in all of our buildings for the start of the 2019-20 school year! There is a spread later in this issue with a more specific construction schedule as well as examples of how our students K-12 are getting involved and using the construction as a learning opportunity. Don't forget to check the referendum page on our website for weekly updates and photos. Please join us for our Break a Brick, Take a Brick event at Hales Corners Elementary on June 12 (more information on the back cover). There will also be a community open house in September, so watch for more details!

During the referendum, we created an email group for community members who wanted to receive updates. We had several hundred community members join the email group. We would like to now offer an e-newsletter for community members that goes beyond facilities updates and goes out more frequently than the Whitnall Window. The e-newsletter will not replace the Whitnall Window, but will allow us to engage the community in a more timely manner. If you would like to receive periodic updates on the district in your inbox, please visit our website and sign up on the home page!

Later in this issue, we share our plan for putting our prospectus into action for continual improvement. We will be expanding our shared vision of We're All In by analyzing our data, planning the work, implementing action plans, and measuring the impacts. There are many great things occurring at Whitnall, and we want to ensure that they are intentional and measurable, so that we may repeat our successes. For more on this, head to page six.

If you are ever looking for some feel good news, navigate to our social media pages for great photos and stories from inside and outside our classrooms. If you are looking for some entertainment, don't miss our upcoming spring music concerts!

Lisa L. Olson

Dr. Lisa L. Olson, Superintendent



WE'RE ALL IN

Retirees



from left to right

Susan Sabre “Spending the last twenty-five years in the Whitnall School District has been a wonderful experience. I have been extremely lucky to have worked with amazing teachers and students at both Hales Corners Elementary and Edgerton Elementary. I began my teaching experience with third graders, but ended up teaching the students I felt I could make the most difference with, the four-year-olds. They are so excited to learn and come to school. I will truly miss the excitement they bring to the classroom every day. Being one of the people that helped to bring the idea of a K4 program to the Whitnall district is an honor. Being a small part in the lives of my students has been a privilege that I will treasure as I move on to the next part of my life. I am thankful to the Whitnall School District for the opportunity to teach.”

every day. Being one of the people that helped to bring the idea of a K4 program to the Whitnall district is an honor. Being a small part in the lives of my students has been a privilege that I will treasure as I move on to the next part of my life. I am thankful to the Whitnall School District for the opportunity to teach.”

Barb McDonald “I have been at Whitnall for a total of nineteen years as a K-5 music specialist at Edgerton Elementary. I have so many memories from the time I have spent here--so many concerts and so many happy times with friends/colleagues. I am grateful for the time I have had to share and nurture my craft of teaching music. My future involves a move to Seattle to be closer to my son and a new job in education and theatre. I am excited for the next chapter of my life, but will miss everyone here at Whitnall.”

Mary Geraghty “Thank you to all of the students, families, and staff members who have been a part of my twenty-nine years at Whitnall. After ten years of teaching kindergarten and third grade in parochial schools, I secured a job as a K5 classroom aide at Edgerton Elementary in 1990. Two years later, I began teaching half day K5. I taught mornings only for six years while my son was young. In 1998, I started in all day K5. It’s been a great thirty-nine years of teaching, but it’s time to travel, read, hike, and spend time with loved ones. Thanks for some great memories.”

Art Educator of the Month

Whitnall Middle School's art teacher, Courtney Goss, was named Art Educator of the Month for March! She was given this honor by the Wisconsin Art Education Association. Ms. Goss is in her second year with Whitnall and says that she, “could not ask for a workplace that offers a greater sense of community.”

When asked about her approach to teaching, she said: “Through building positive relationships, and open mind to meet my students in the middle, and the motto ‘Every accomplishment starts with the decision to try,’ my goal is to create a safe and positive environment for all students that walk through my door.”



February’s Top Teacher

Ryan Boylen, our high school trades teacher, was named February’s Top Teacher by WISN 12 News! He was nominated by a student, who wrote, “I respect him a lot for how he’s 110% focused on his students. He has a passion for seeing us learn and succeed. He strongly cares about everyone around him.” This is Mr. Boylen’s first year with Whitnall, and we can’t wait to see him continue his incredible work in our trades program!



High School Fall & Winter Sports

Boys Swim David Haun: State Qualifier, 6th at State • David Gonzales: State Qualifier • Matt Wroblewski: State Qualifier • Matt Bass: State Qualifier **Cheer** 7th at State in Non Tumbling **Dance** State Champions in Hip Hop Division 2 **Girls Swim & Dive** 7th at State in Division 2 • Conference Champions • Nicole Beckman: State Qualifier, State Champion • Isabella Smith : State Qualifier • Rachel Lenz: State Qualifier • Kamyla Held: State Qualifier • Alyssa Radant: State Qualifier • Grace Radke: State Qualifier • Nefeli Tselemegkou: State Qualifier • Eva Beier: State Qualifier **Girls Tennis** Conference Champions • Autumn Bruno: State Qualifier • Jenna Dundas: State Qualifier **Girls Volleyball** Conference Champions **Wrestling** Conference Champions • Brandt Hausch: State Qualifier

For a complete list of individual accomplishments not at the state-level, you can visit our website. Spring sports and all activities will be featured in the summer issue of The Whitnall Window.



Pictured: Boys Swim | Dance | Girls Swim & Dive

Anti-Bullying Efforts at Whitnall Middle School

In November of 2018, Whitnall Middle School received an anti-bullying grant from Children’s Hospital of Wisconsin and the Wisconsin Department of Public Instruction. The focus of the grant is to train both staff and students in how to identify and address bullying. Staff will complete a program called Act Now!, which teaches staff about bullying prevention. Students have been introduced to the topic, have completed a bullying survey to identify the level of concern at WMS, and have formed an anti-bullying panel. Over forty students participated in the anti-bullying panel, which provided student insight on causes, solutions, and preventative measures. The next steps include--but are not limited to--creating an action plan for future instances of bullying, having all students sign an anti-bullying contract, facilitating restorative conversations between bullies and the bullied, and continuing learning related to the issue. Students will also continue creating anti-bullying projects (such as videos and blogs) and will grow the anti-bullying club, which was started by two 6th grade students this school year. WMS will also host assemblies with artist Eric Samuel Timm, who paints while delivering a positive message about being an upstanding individual. At the end of the talk, the painting is given to the school as a symbol of his message. As stated earlier, the efforts listed here represent only some of the awesome anti-bullying work being done at the middle school. Kudos, WMS!



Beam Signing

In February, every learner at Hales Corners Elementary got to sign a beam that was placed in the school's addition. We overheard one student say, "Now I will be a part of the school forever!"



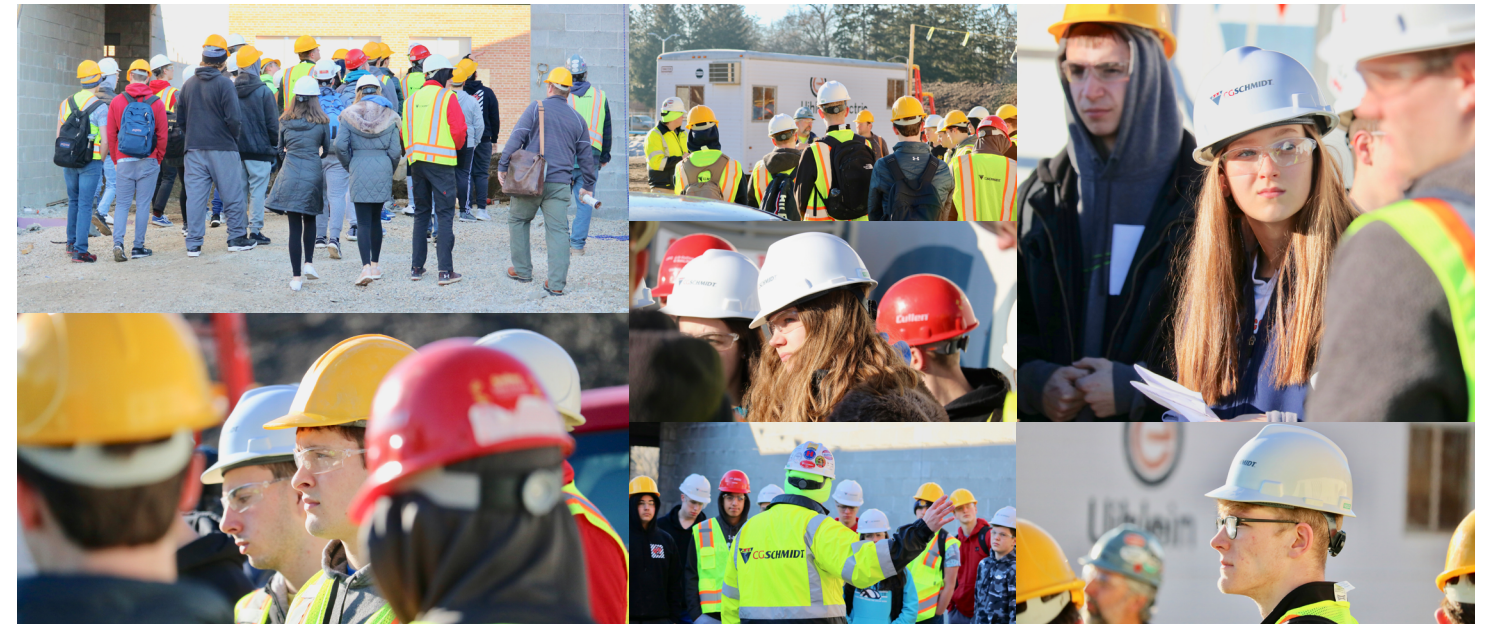
Construction Schedule

While construction schedules are ever-changing (especially in Wisconsin weather), we have put together a tentative timeline of the projects at Hales Corners Elementary, Whitnall High School, Whitnall Middle School, and Edgerton Elementary. We cannot wait to reveal the new/renovated spaces in the fall!

MARCH	APRIL	MAY	JUNE	JULY	AUGUST	SEPTEMBER
HCE Structure of Addition Exterior of Addition	HCE Interior of Addition	HCE Interior of Addition Courtyard Playground	HCE Interior of Addition Upgrades to Existing Exterior Playground	HCE Interior of Addition Upgrades to Existing Exterior Playground 1948 Wing Demolition New Parking	HCE Interior of Addition Upgrades to Existing New Parking	HCE Interior of Addition New Parking
WHS STEM Wing Renovation Second Floor Bathrooms Pool Upgrades	WHS STEM Wing Renovation Second Floor Bathrooms Pool Upgrades	WHS STEM Wing Renovation Second Floor Bathrooms	WHS STEM Wing Renovation First Floor Bathrooms	WHS STEM Wing Renovation First Floor Bathrooms	WHS First Floor Bathrooms	
WMS Science Classrooms	WMS Science Classrooms	WMS Science Classrooms	WMS Science Classrooms Bathrooms	WMS Science Classrooms Bathrooms	WMS Bathrooms	
			EES Bathrooms Fire Alarms	EES Bathrooms Fire Alarms	EES Bathrooms Fire Alarms	

High School Tours

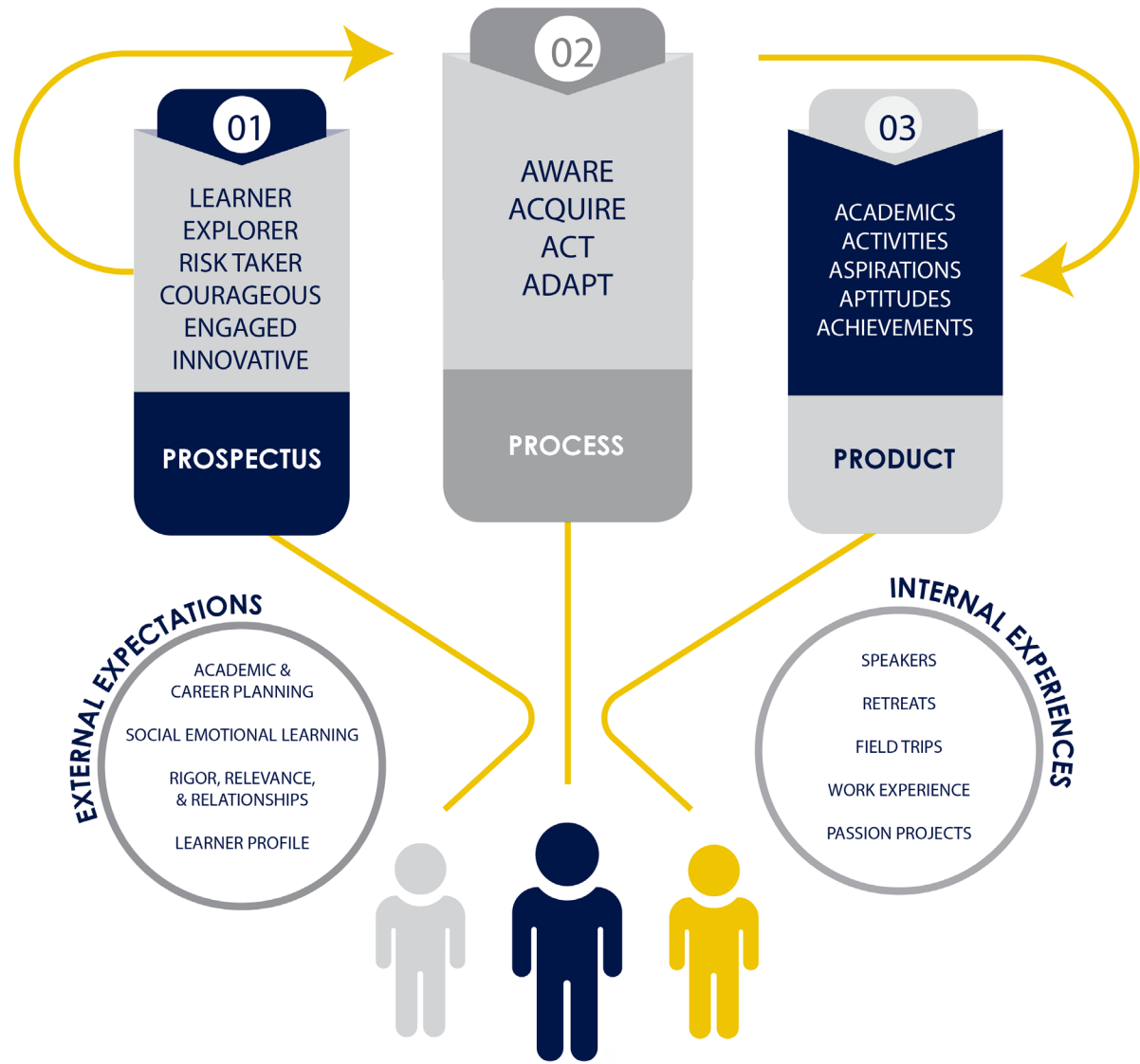
In March, our high school trades classes toured the construction at Hales Corners Elementary. It was a great opportunity for the students to experience a real worksite and to connect with working tradespeople. This opportunity was made even more special by the fact that it was within the district!



Edgerton Mural

Parents, learners, and staff were all in on the creation of this mural at Edgerton Elementary. A beautiful message and beautiful artwork. Parents painted the large flowers, staff added the bumblebees, and learners did the small flowers. This is the beauty of collaboration. "Be the kid who is happy for other people."





advancement belonging courage



**PROUD
HISTORY
BRIGHT
FUTURE**

In October of 2018, we officially announced our vision for the Whitnall School District -- We're All In. This vision is one part of a purpose-passion-values-vision model that we unveiled in the form of a prospectus. We are now taking it a step further and developing a formal continual improvement plan from our prospectus. We know who we want to be. Now how do we live up to it? We are developing a plan that takes Whitnall learners from the **prospectus**, through a **process**, to having a **product** that details their journey. We are calling it our "Continual Improvement Roadmap" and, with it, we will navigate our way to improved student learning and achievement.

There are many **external expectations** placed on districts and their students. Some of those expectations are legislative, while some we embrace to create consistencies for students across the state and to enhance learning experiences and outcomes.

There are also unique opportunities that we provide not because we have to or because others are, but because they align with who we are and what we are trying to accomplish at Whitnall. These are **internal experiences**.

Often, the implementation of both external expectations and internal experiences seems disjointed and even daunting. Our Continual Improvement Roadmap will integrate them into one plan that both standardizes learner outcomes *and* allows for personalization. We envision a portfolio of experiences, rather than just a list of test scores. The graphic above represents the roadmap visually and hints at some of the specifics, which we will share as we continue to develop this exciting new step in being all in.

THE WHITNALL WINDOW

Non-Profit
Org
U.S. Postage
PAID
Milwaukee,
WI
Permit No.1



Whitnall School District
5000 S. 116th Street
Greenfield, WI 53228
414.525.8400
www.whitnall.com

WSD Board of Education

- Jonathan Cagle | President | Hales Corners | Since 2014
- Quin Brunette | Vice-President | Greenfield | Since 2012
- Kevin Stachowiak | Clerk | Hales Corners | Since 2015
- Stephanie Richter | Treasurer | Hales Corners | Since 2010
- Nancy Zaborowski | Member | Greenfield | Since 2008
- Jon Jones | Member | Franklin | Since 2014
- Steven Butz | Member | Greenfield | Since 2018

This was the board at the time of this printing. By the next issue, Stephanie Richter will have ended her time on the board, Karen Mikolainis will have joined, and the board will have had a reorganization of officers.

#whitnALLIN

On June 12, community members are invited to our Break a Brick, Take a Brick event at Hales Corners Elementary. Before the 1948 portion of the building is professionally demolished, you can take a swing at the walls and take a brick home with you! Have a piece of HCE with you forever. The event will begin at 6 PM. We hope to see you there!



Newsletter feedback?
Send to
lvasquez@whitnall.com

Follow Us on Social Media!



@whitnallschools for all three!