

Prospectus History

The last strategic plan for the Whitnall School District was created in 2012. In 2015, a mission statement, vision statement, and tagline were added. While the mission statement and vision statement were rather long, you may recall the tagline: engage, prepare, achieve.

During the 2016-17 school year, we took the first step in updating Whitnall's strategic plan. We conducted over 110 interviews with district parents and students. From those interviews, a "point of view statement" was derived. This point of view has driven our work since being developed.

In July of 2018, the school board and the administrative team reviewed the previous strategic plan, the point of view statement, the 2018-19 district goals, and culture data to develop a revised purpose - passion - values - vision model for the district in the form of a prospectus. The prospectus has gone through many iterations and is the result of many people's consideration. We are proud of how well the prospectus represents what we do, why we do it, who we are, and who we want to be.

Principal Messages

Lori Komas (left): As the 2018-19 school year begins, Hales Corners Elementary is embracing a message of acceptance--accepting yourself and accepting others. This focus is expressed in our theme for the school year: "I am unique. I am me. I am HCE." During the year ahead, we will watch with excitement as HCE gets a new look; the changes to our building will enhance safety, learning spaces, and traffic. Thank you to the Whitnall community for supporting our referendum!

Chris D' Acquisto (center left): I am excited and honored to be serving as principal at Edgerton Elementary for the 14th year. The coming school year will provide important opportunities for the academic and social growth of our learners. We will be deep into construction, both in our community as well as in our schools, thanks to your support on the referendum. At Edgerton, crews will be working on updating the fire alarm system and making the school compliant with the Americans with Disabilities Act. I am looking forward to a wonderful year of learning, serving, and creating lasting memories.

Charles Tollefsen (center right): At Whitnall High School, we are so excited for what 2018-19 will bring. Our focus continues to be preparing students academically, but also focusing on necessary skills for life after high school. Whitnall is known for its strong sense of community. WHS wants to honor that with a focus on positive student relationships and community building in all classes. One new goal for the year is to build partnerships, bringing the community in and getting our students out in the community. It looks like this school year will be one of the best yet!



Bob Antholine (right): I am thrilled to be supporting Whitnall Middle School as the principal this coming year. This is a full circle for me, as I am a graduate of Whitnall High School. This is the start of my 19th year in education and my 9th in administration. My wife is a middle school teacher, and both of my daughters will be in middle school this year in a neighboring district. Currently, my entire life is at the middle level! I'm excited to be "all in" with our Whitnall community.

THE WHITNALL WINDOW



Whitnall School District
5000 S. 116th Street
Greenfield, WI 53228
414.525.8400
www.whitnall.com

Non-Profit
Org
U.S. Postage
PAID
Milwaukee,
WI
Permit No.1



Newsletter feedback?
Send to
lpeaslee@whitnall.com

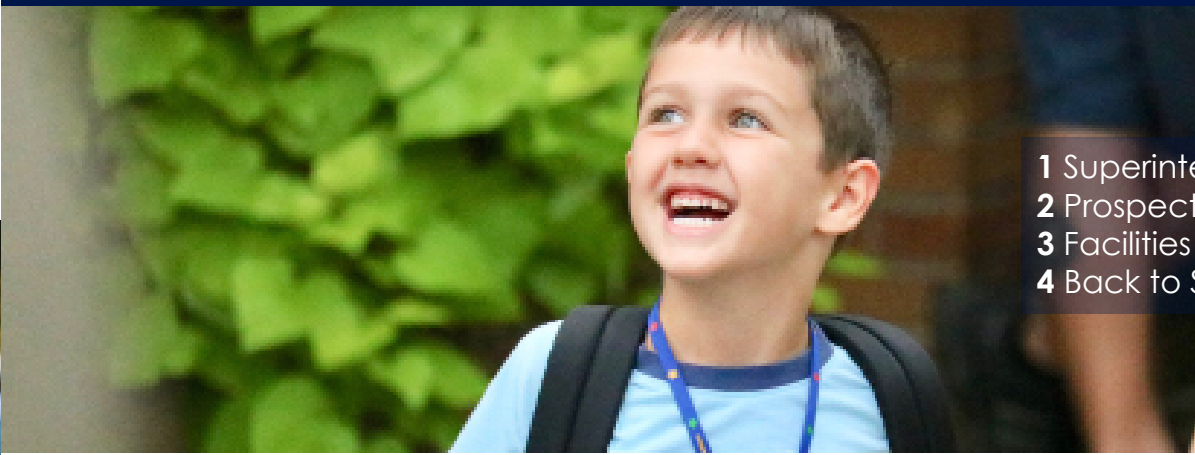
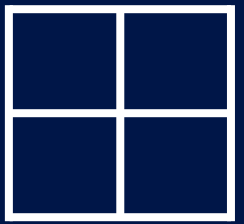
Follow Us on Social Media!



@whitnallschools for all three!

THE WHITNALL WINDOW

FALL 2018



- 1 Superintendent's Message
- 2 Prospectus / Principal Messages
- 3 Facilities
- 4 Back to School

THE SUPERINTENDENT'S MESSAGE

After a summer of designing for the new school year, we are off to a great start. During the summer, the school board and district leadership team spent time finalizing our strategic elements in the form of a prospectus. Our purpose, passion, values, and vision can be found in this issue. Our 2018-19 district goals and 45-day plans can be found on our website. The district is committed to bringing the goals to fruition as we aspire to our vision of We're All In.

In addition to our academic and cultural goals, we continue to be diligent with school safety. We have revised our traffic flow around WMS and WHS and have added more crossing guards. Changes to traffic flow at HCE will occur after the referendum work is completed. Updates from the first round of safety grants is almost complete, and we are awaiting notification on the second school safety grant. We will continue working with local fire and police departments to review and practice our safety procedures.

To make our curriculum relevant and rigorous, we are adding more enrichment and problem-based learning for our students. In order to stimulate innovative thinking, we need to go beyond the rote memorization of information. This year, we will continue to review the co-curricular activities to support a balanced educational program and to ensure there are robust options for all students to meet their needs, interests, and abilities.

During the summer, we also prepared for the referendum projects, working on the design documents with the architects and engineers. Later in this issue, there are project descriptions and renderings, in addition to a summary of the summer work. As soon as we have approval for building permits and planning documents, we will share both the date of our official groundbreaking and the timeline.

As always, we value the input of community members, students, and parents. We will be adding more options to solicit input and respond to questions from all our stakeholders in the near future. I look forward to another wonderful school year and the accomplishments of our students and staff.

Lisa L. Olson
Dr. Lisa L. Olson, Superintendent



WE ENGAGE LEARNERS IN A WAY THAT FOSTERS INNOVATION, RISK TAKING, AND EXPLORATION TO ATTAIN PERSONAL LEARNING GOALS WITHOUT THE FEAR OF FAILURE.

WHITNALL SCHOOL DISTRICT PROSPECTUS



! PURPOSE

We **engage** learners in a way that fosters **innovation**, **risk taking**, and **exploration** to attain personal learning goals without the fear of failure.

! PASSION

Knowing, **understanding**, and **encouraging** learners as individuals
Developing natural **curiosity** in nurturing environments

! VALUES

Advancement
Belonging
Courage

! VISION

We're **all** in.

Thanks to parent and community member, Joe Hausch from Hausch Design Agency, for helping to design our new logo to match our vision. You can expect to see the logo throughout the district and community as we launch our new branding and tagline.



Facilities

History

In mid July, the district advertised for a construction management firm. In early August, the submissions were reviewed and a shortlist was developed. The firms on the shortlist were interviewed and asked to provide fee proposals, a plan for use of local vendors, and a model of a working relationship with the district. The district ultimately chose CG Schmidt to carry out Bray Architects' plans. The selection was approved at the September 10 board meeting. Thanks to the work of both Bray Architects and CG Schmidt, we will be able to realize our hopes for our learning spaces. And thank you again, Whitnall community, for your support. None of this would be possible without your passing of the referendum. Take a look at what will be done at Hales Corners Elementary, Whitnall Middle School, and Whitnall High School!



Whitnall Middle School



The science classrooms and labs will be the primary focus at Whitnall Middle School. This floor plan for this space will be redesigned to allow for separate science lab spaces, small group study rooms, a commons area, and adjustable classroom space. We have relocated math classrooms adjacent to the science classrooms so the first floor will be primarily dedicated to STEM (science, technology, engineering, math).



Facility Projects Outside the Referendum

Over the summer, the district completed several facilities projects through the operating budget. These projects include:

- Renovation of WMS library into a maker's lab
- Renovation of WMS double classroom and breakout rooms into new library
- New metal bleachers and audio system in WHS pool mezzanine
- Remodeling of WMS staff room into special education sensory area
- Renovation of old WHS band room to multi-purpose room (asbestos removal and carpeting)
- Renovation of WHS double classrooms (painting and new flexible seating)
- Removal of old fencing and shed behind WHS

Hales Corners Elementary

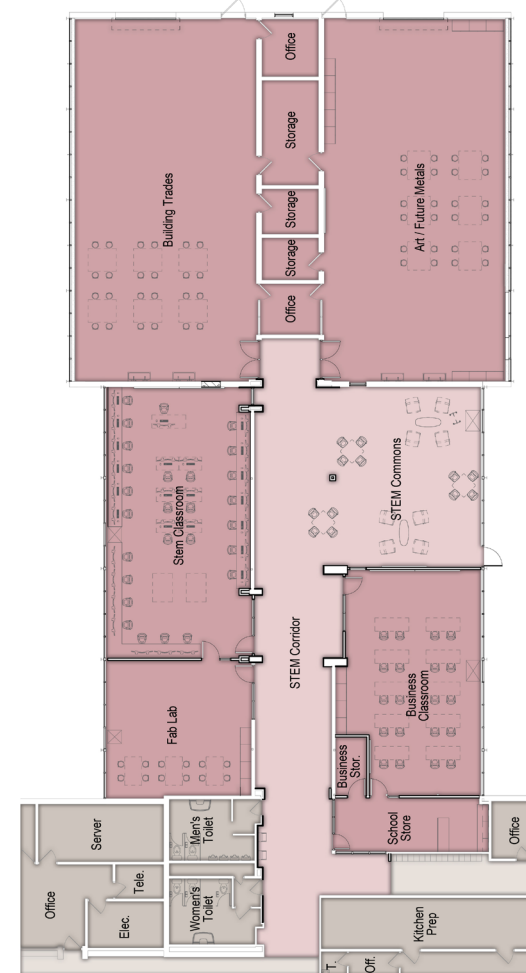
The largest project within the referendum is Hales Corners Elementary. The addition to HCE will replace the 1948 portion of the building on the east side. The addition will house K4, K5, art, and special education classrooms. The front entrance of HCE will be relocated to the Janesville Road side of the building and will feature safer and more intuitive access. After the demolition of the 1948 wing, the parking lots will be expanded in order to enhance parent pick-up and drop-off and decrease street parking. A playground for our primary learners will be added in the new courtyard area.



Whitnall High School



Renovations at Whitnall High School include replacing boilers, roofing, and the pool liner as well as resolving the flooding problems in the lower level. All of these projects are part of the referendum and are being bid out as separate projects by the district. There will also be upgrades to some restrooms to make them ADA compliant. In addition, the STEM area will be entirely rebuilt to include updated spaces for building trades, manufacturing, business and marketing, design, and applied technologies. This project will be managed by the construction firm and is anticipated to be complete for the beginning of the 2019-20 school year.



Check out our referendum page on our website for more information!