

WHITNALL SCHOOL DISTRICT



1960

50th ANNIVERSARY

2010

2010-2011 CALENDAR

Board of Education

Bill Osterndorf, President
327-2584

Nancy Zaborowski, Vice-President
427-9604

Bernie Shaw, Treasurer
425-0465

Mike Clarizio, Clerk
525-1477

T.J. Anderson, Member
427-8348

Suzette Larson, Member
425-7042

Richter, Stephanie, Member
262-844-2997

District Office · 525-8400

5000 South 116 Street
Greenfield, WI 53228
Hours: 7:30 a.m. – 4:30 p.m.

Dr. Lowell Holtz, Superintendent

Mr. Tom Vogel, Director of Human Resources
and Special Services

Mrs. Amy Kohl, Business Manager

District Information

Edgerton Elementary School · 525-8900

5145 South 116 Street
Hales Corners, WI 53130
Regular Hours: 8:40 a.m. - 3:22 p.m.
Early Dismissal: 8:40 a.m. - 11:20 a.m.
Conferences: 11/22 & 3/8 4-6pm
11/23 & 3/10 12:30-6:30pm

Mr. Chris D'Acquisto, EES Principal

Hales Corners Elementary School · 525-8800

11319 West Godsell Avenue
Hales Corners, WI 53130
Regular Hours: 8:40 a.m. - 3:22 p.m.
Early Dismissal: 8:40 a.m. - 11:20 a.m.
Conferences: 11/22 & 3/8 4-6pm
11/23 & 3/10 12:30-6:30pm

Ms. Lori Kommas, HCE Principal
Ms. Christine Bruss, Guidance Counselor

Whitnall Middle School · 525-8660

5025 South 116 Street
Greenfield, WI 53228
Regular Hours: 7:45 a.m. - 2:50 p.m.
Early Dismissal: 7:45 a.m. – 11:00 a.m.
Conferences: 11/11 & 2/24 4-8pm

Mrs. Lynn Stadler, WMS Principal
Mr. Brian Borden, Dean of Students
Mr. Jim Gableman, Guidance Counselor

Whitnall High School · 525-8500

5000 South 116 Street
Greenfield, WI 53228
Regular Hours: 7:15 a.m. - 2:18 p.m.
Early Dismissal: 7:15 a.m. – 11:45 a.m.
Conferences: 11/11 & 2/24 4-8pm

Mr. Anthony Brazouski, WHS Principal
Mrs. Jackie Winter, Assistant Principal
Ms. Jill Stobber, Asst Principal & Athletic Director
Mrs. Janet Callender, Guidance Counselor J-O
Mr. Mike Neumann, Guidance Counselor A-I
Ms. Nora Revoir, Guidance Counselor P-Z

CORE 4 Charter School

Sue Sabre, Chair	525-8835
Amy Koenigs, Vice-Chair	525-8946
TBD, Secretary	
Lori Kommas, Administrator	525-8802

CORE 4 Sites

1. Edgerton Elementary School · 525-8900

5145 South 116 Street
Hales Corners, WI 53130
Hours: AM Session 8:40am-11:22am
PM Session 12:42pm-3:22pm

Mr. Chris D'Acquisto, EES Principal

2. Hales Corners Elementary School · 525-8800

11319 West Godsell Avenue
Hales Corners, WI 53130
Hours: AM Session 8:40am-11:22am
PM Session 12:42pm-3:22pm

Ms. Lori Kommas, HCE Principal

IMPORTANT SCHOOL INFORMATION

Student Absence Notification

Parents are expected to notify the school office on the first day of a student's absence, as early in the morning as possible. **The parents should follow-up the call with a written note clearly stating the reason for the absence.** If the school does not receive a call from the parent, the parent will be called by the school.

Leaving the School Building

On occasion, students may have to leave school during the day because they are sick or have a doctor's appointment. Parents are to report to the school office to pick up their child and sign them out.

School Lunch Program

Whitnall School District is a participant in the Federal School Lunch Program. A nutritious lunch is available to all students. In addition, an ala carte service is available at Whitnall Middle School and Whitnall High School.

Menus for the food service program are planned and published on a monthly basis. The menus are designed to include the required nutritional balance through a variety of item combinations that appeal to students at the various grade levels. Check the menus out on the web, www.whitnall.com.

All program costs are covered by a combination of cash receipts and federal reimbursements. The following lunch prices were approved by the Board of Education.

Elementary	\$1.90/day
Middle School	\$2.30/day
High School	\$2.30/day
Adults	\$3.50/day
Senior Citizens	\$2.30/day
Specialty Lunch	\$3.50/day
Chef Lunch	\$3.75/day
Milk	\$0.35/day

Bus Route Assignments

Bus information will be distributed either during Registration Days or shortly thereafter. Bus transportation is available for students not eligible for transportation, for a fee. Any student that is eligible for free or reduced lunch will be considered for reduced bus transportation fees at one-half the costs of the current busing fees. If you do not receive your bus information or have questions, contact Gloria Lohman at 525-8417.

Chapter 220 Whitnall students from Milwaukee should receive their school transportation information by the middle of August. It will be mailed directly to your home from Milwaukee Public Schools. If you fail to receive your bus assignment, please contact Linda Kulwicki at 525-8524.

Emergency School Closings

During the school year, school may close because of weather emergencies. The Superintendent will announce closings on the following radio stations:

<i>WEMP</i>	<i>1250 AM</i>	<i>WMYX</i>	<i>99 FM</i>
<i>WOKY</i>	<i>920 AM</i>	<i>WISN</i>	<i>1130 AM</i>
<i>WTMJ</i>	<i>620 AM</i>	<i>WQBW</i>	<i>97.3 FM</i>

Directory of Services

Athletics/Activities	Jill Stobber	525-8505
At-Risk	Tom Vogel	525-8404
Buildings/Grounds	Matt Karshna	525-8450
Business Services	Amy Kohl	525-8403
Chapter 220	Linda Kulwicki	525-8524
Curriculum/Instruction		525-8414
ELL		525-8414
Facility Use	Matt Karshna	525-8403
Food Service Manager		525-8431
Gifted and Talented		525-8414
Homeless Liaison	Tom Vogel	525-8404
School Psychologist	Shirley Natzel	525-8443
School Social Worker	Steve Petrie	525-8444
Special Education	Tom Vogel	525-8440
Superintendent	Dr. Lowell Holtz	525-8411
Technology Coordinator	Greg Haar	525-8484

2010-11 SCHOOL FEES

School Fees

All fees are payable on registration day. Any parent not paying fees within the first week must file a **Fee Payment Extension Form**. Fees are subject to change.

BASIC FEES

Elementary	Middle School	High School
Early Childhood & K4 Grades K5 - 5	Grades 6-8 Explore Fee	Grades 9-12
\$50.00 \$60.00	\$75.00 \$10.00	\$100.00
Club fee Instrument Use Fee	Club fee 7-8 Short Season Sport 7-8 Long Season Sport Instrument Rental (As Needed) Gym Short Gym Shirt Future Problem Solvers (State & Nationals)	9-12 Drama (per play, on stage participants only) 9-12 Sport (Each) Football Club fee Future Problem Solvers Gym Short Gym Shirt Instrument Rental (As Needed) Fall Marching Band Winterguard/drumline Student Parking, Per Semester Student Parking, Daily Student Parking, Monthly Summer Community Marching Band Fitness Center (Student Summer) Fitness Center (Adult Summer) Fitness Center (Adult School Year) Transcript
\$25.00 \$75.00	\$30.00 \$50.00 \$50.00 \$75.00 \$10.00 \$10.00 \$45.00	\$20.00 \$100.00 \$150.00 \$0/30/60* \$45.00 \$10.00 \$10.00 \$75.00 \$150.00 \$150.00 \$75.00 \$5.00 \$20.00 \$150.00 \$20.00 \$50.00 \$100.00 \$5.00

*0 for service clubs, \$30 activity clubs, \$60 competitive clubs

Individual classes may have extra charges for consumables to supplement the regular program.

Parent Organizations

Edgerton Elementary School PTO

Yvette Cunningham, President	525-7209
Georgiann Becker, Vice-President	688-5892
Monica Marchan, Treasurer	545-2260
Ana Schlehlein, Secretary	235-3378

Hales Corners Elementary School PTO

Julie Soczka, Co-President	425-9881
Janine LaMonte, Co-President	329-1064
Lauren Hys, Vice-President	425-6650
Tracy Galewski, Secretary	529-0733
Mike Mackie, Treasurer	525-2675

Whitnall Middle School PTO

Lynn Stadler	525-8652
--------------	----------

Whitnall High School Parent Advisory Committee

Anthony Brazouski, Chair	525-8502
--------------------------	----------

Whitnall Falcon Booster Club

www.whitnallfalconboosterclub.com

Whitnall Band Boosters, Inc.

Tracy Wunrow, President	525-1302
Jennifer Pratt, Vice President	427-9453
Mary Hermann,	328-4234
Corresponding Secretary	
Gail Hodkiewicz, Recording Secretary	529-4835
John Kasper, Treasurer	427-2734

STUDENT IMMUNIZATION LAW 2010-2011 AGE/GRADE REQUIREMENTS

The following are the minimum required immunizations for each age/grade level. It is not a recommended immunization schedule for infants and preschoolers. For that schedule, contact your doctor or local health department.

Age/Grade	Number of Doses					
Pre K (2 yrs through 4 yrs)	4 DTP/DTaP/DT		3 Polio	3 Hep B	1 MMR ₅	1 Var ₆
Grade K through 2	4 DTP/DTaP/DT/Td ₁		4 Polio ₄	3 Hep B	2 MMR ₅	2 Var₆
Grade 3 through 5	DTP/DTaP/DT/Td ₂ 4		4 Polio ₄	3 Hep B	2 MMR ₅	1 Var ₆
Grade 6 through 8	4 DTP/DTaP/DT/Td ₂ 1 Tdap₃	1 Tdap ₃	4 Polio ₄	3 Hep B	2 MMR ₅	2 Var₆
Grade 9 through 11	4 DTP/DTaP/DT/Td ₂ 1 Tdap₃	1 Tdap ₃	4 Polio ₄	3 Hep B	2 MMR ₅	1 Var ₆
Grade 12	4 DTP/DTaP/DT/Td ₂ 1 Tdap₃	1 Tdap ₃	4 Polio	3 Hep B	2 MMR ₅	2 Var₆

1. DTP/DTaP/DT vaccine for children **entering Kindergarten**: Your child must have received one dose after the 4th birthday (either the 3rd, 4th, or 5th) to be compliant. (Note: a dose 4 days or less before the 4th birthday is also acceptable).
2. DTP/DTaP/DT/Td vaccine for students **entering Pre K and grades 1 through 12**: Four doses are required. However, if your child received the 3rd dose after the 4th birthday, further doses are not required. (Note: a dose 4 days or less before the 4th birthday is also acceptable).
3. Tdap means adolescent tetanus, diphtheria and acellular pertussis vaccine, recommended for adolescents. If your child received a dose of tetanus or diphtheria containing vaccine such as Td within the past 5 years of entering the grade in which Tdap is required, your child is compliant and a dose of Tdap is not required.
4. Polio vaccine for students entering grades **Kindergarten through 12**: Four doses are required. However, if your child received the 3rd dose after the 4th birthday, further doses are not required. (Note: a dose 4 days or less before the 4th birthday is also acceptable).
5. The first dose of MMR vaccine must have been received on or after the first birthday (Note: a dose 4 days or less before the 1st birthday is also acceptable).
6. Var means Varicella (chickenpox) vaccine. A history of chickenpox disease is also acceptable.

Immunization clinics are conducted by the Hales Corners, Franklin, Greenfield and Milwaukee Health Departments. Vision, Dental, and Well-Child checks are encouraged for incoming Kindergarteners.

For more information about immunization clinics, please contact your local health department.

Greenfield Health Department
Franklin Health Department

543-5500
425-4101

Hales Corners Health Department
Milwaukee Health Department

529-6155
278-3624

July 2010

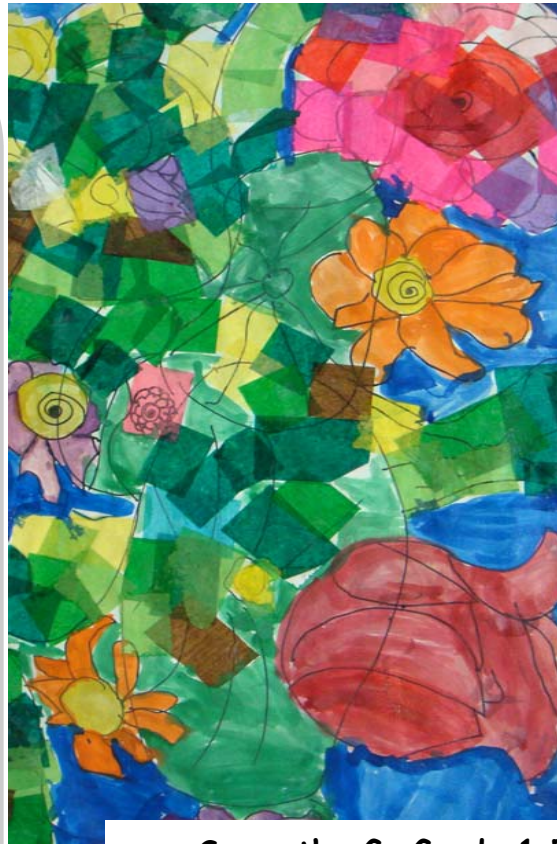
Sunday	Monday	Tuesday	Wednesday	Thursday	Friday	Saturday
				1	2	3
Independence Day 4	Independence Day Observed 5	6	7	8	9	10
11	12 School Board Mtg, 6:30pm Board/Community Room	13	14	15	16	17
18	19	20	21	22	23	24
25	26 School Board Mtg, 6:30pm Board/Community Room	27	2010/11 All District Registration Last Names A-L, WMS 7:30-11am & 3-7pm 28	2010/11 All District Registration Last Names M-Z, WMS 7:30-11am & 3-7pm 29	30	31

August 2010

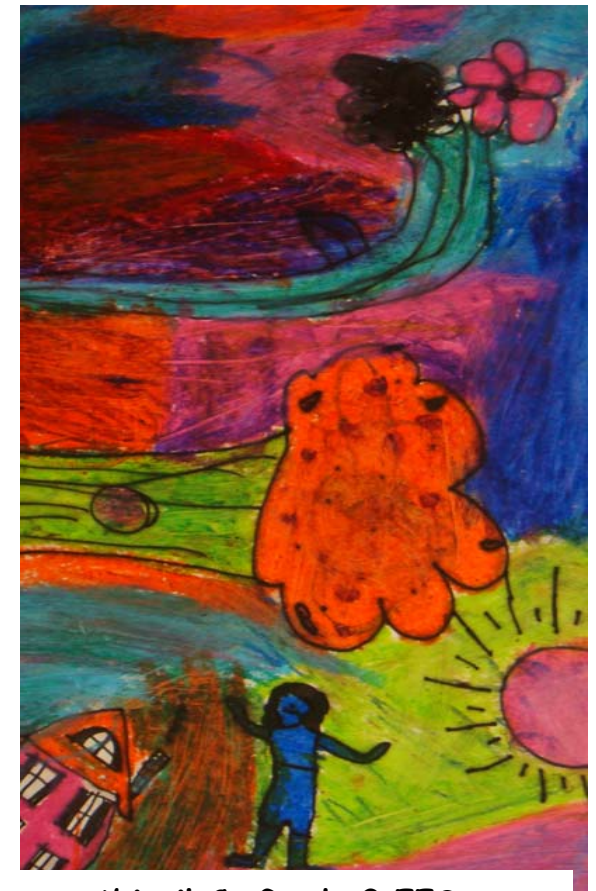
Sunday	Monday	Tuesday	Wednesday	Thursday	Friday	Saturday
1	2	3	4 <i>Band Booster Mtg, 7pm</i>	2010/11 All District Makeup Registration Day 2:30-7:30pm, WMS 5	6	7
8	WHS Fall Athletic Mtg, 6pm 9 School Board Mtg, 6:30pm Board/Community Room	10	11	School Offices Open 12 <i>Falcon Booster Mtg, 7pm</i>	13	14
15	16	17	18	19	20	21
22	23 School Board Mtg, 6:30pm Board/Community Room	24	25	Teacher Workday 26 EES Back To School Night & Ice Cream Social 5:30- 7:30pm HCE Back to School Night 6-7:30pm	Teacher Inservice Day 27	28
29	Teacher Inservice Day 30	Teacher Inservice Day 31				

**SEPTEMBER
EVENTS
AT A GLANCE**

- 9/1 **1st Day of School Grades 1-12**
- 9/2 **1st Day of School Grades K4 & K5
As assigned**
- 9/3 **1st Day of School Grades K4 & K5
As assigned**
- 9/6 **NO SCHOOL**
Labor Day
- 9/7 **SCHOOL RESUMES**
- 9/8 WHS Back to School Open House
- 9/9 WMS Picture Makeup Day
- 9/13 School Board Mtg, 6:30pm
WHS Library
- 9/16 Mildred Fish Harnack Day
- 9/17 US Constitution Day
POW-MIA Recognition Day
- 9/20 Market Day Pickup 5-6pm
WMS Café
- 9/22 Wisconsin Day
- 9/22 WHS Homecoming Pep Assembly
- 9/24 WHS Homecoming Game, 7pm
- 9/25 WHS Homecoming Dance, 7pm
- 9/27 Annual School Board Mtg, 6:30pm
School Board Mtg to follow
- 9/28 Frances Willard Day
- 9/28-10/1 WMS New York Trip



Samantha G. Grade 1 EES



Abigail C. Grade 2 EES



Aidan W. Grade 1 EES

September 2010

Sunday	Monday	Tuesday	Wednesday	Thursday	Friday	Saturday
			1st Day of School Grades 1-12 (Gr K4 & K5 Staggered per Letter) 1	(Gr K4 & K5 Staggered per Letter) 2 <i>HCE PTO Fundraiser Kickoff</i>	All K4 & K5 in Session 3	4
5	NO SCHOOL Labor Day 6	SCHOOL RESUMES All Grades Attend 7	WHS Back to School Open House, 6:30pm 8	WMS Picture Makeup Day 9 <i>EES PTO Mtg, 6:30pm LMC</i> <i>Falcon Booster Mtg 7pm</i>	10	Patriot Day 11
Grandparent's Day 12	13 <i>EES PTO Fundraiser Kickoff</i> <i>Fundraiser 9/13-9/27</i> School Board Mtg, 6:30pm WHS Library	14	15	Mildred Fish Harnack Day 16 <i>HCE Room Parent Tea</i> <i>3:30pm</i>	US Constitution Day POW-MIA Recognition Day 17	18
19	20 Market Day Pickup 5-6pm WMS Café'	21 <i>HCE Tailgate Tuesday</i> <i>3:30-5pm</i>	Wisconsin Day 22 WHS Homecoming Pep Assembly, 6:30pm	1st Day of Autumn 23 HCE Field Day <i>HCE PTO Mtg, 7pm, LMC</i>	24 HCE Field Day Rain Date WHS Homecoming Game, 7pm	25 WHS Homecoming Dance, 7pm
26	27 <i>EES PTO Fundraiser Ends</i> Annual Board Mtg, 6:30pm School Board Mtg to follow Board/Community Room	Frances Willard Day 28	HCE Picture Makeup/ Retake Day 29	30 WHS Senior Yearbook Pictures Due		
			-----WMS New York Trip 9/27/10-10/1/10-----			

OCTOBER EVENTS AT A GLANCE

- 10/8 Leif Ericson Day Observed
- 10/11 Columbus Day Observed
- 10/11 School Board Mtg, 6:30pm
Board/Community Room
- 10/13 WHS Explore, PLAN, PSAT, Practice
ACT
- 10/13 WHS Marching Band Community
Night
- 10/14 EES Open House, 6:30pm
- 10/14 WMS 7th Gr Human Growth & Dev.
Meeting, 6:30pm, Room 118
- 10/15 HCE Monster Mash Dance, WMS
- 10/18 Market Day Pickup 5-6pm
WMS Café
- 10/19 EES Activity Picture & Retake Day
- 10/20 Junior/Senior Parent Night
- 10/22 WMS Fall Dance, 6-9pm
- 10/25 School Board Mtg, 6:30pm
Board/Community Room
- 10/26 WHS Student Senate Haunted
Hallways, 6pm
- 10/26-
11/26 WKCE Test Window
- 10/28 **NO SCHOOL**
Teacher's Convention
- 10/29 **NO SCHOOL**
Teacher's Convention



Camilla B. Grade 12 WHS

October 2010

Sunday	Monday	Tuesday	Wednesday	Thursday	Friday	Saturday
					1	2
3	4	5	6 <i>Band Booster Mtg, 7pm</i>	7 EES Room Parent Mtg, 3:30pm <i>EES PTO Mtg, 6:30pm, LMC</i> HCE Open House 6:30-7:30pm	8 Leif Ericson Day Observed	9 Leif Ericson Day
10	11 Columbus Day Observed School Board Mtg, 6:30pm Board/Community Room	12 Columbus Day	13 WHS Explore, PLAN, PSAT, Practice ACT WHS Marching Band Community Night, 8pm Falcon Stadium	14 EES Open House, 6:30pm <i>HCE Fundraiser Pickup</i> 7th Gr Human Growth & Dev. Mtg 6:30pm Rm118 <i>Falcon Booster Mtg 7pm</i>	15 National Boss Day <i>HCE Monster Mash Dance WMS</i>	16
17	18 Market Day Pickup 5-6pm WMS Café'	19 EES Activity Picture & Retake Day	20 Junior/Senior Parent Night	21 <i>HCE PTO Mtg, 7pm, LMC</i>	22 WMS Fall Dance, 6-9pm	23
24 United Nation's Day	25 School Board Mtg, 6:30pm Board/Community Room -----WKCE Test Window Until 11/26-----	26 <i>EES PTO Fundraiser Delivery 3-6pm</i> WHS Student Senate Haunted Hallways, 6pm	27 HCE Harvest Parade	28 NO SCHOOL Teacher's Convention	29 NO SCHOOL Teacher's Convention	30
31 Halloween						

NOVEMBER EVENTS AT A GLANCE

School Board Mtg, 6:30pm 1/22

- 11/1 **NO SCHOOL**
Collaborative Release/Work Day
- 11/4 WHS Winter Athletic Mtg, 6pm
- 11/5 End of 1st Quarter
- 11/5-7 WHS Fall Play
- 11/8 School Board Mtg, 6:30pm
Board/Community Room
- 11/11 **WHS & WMS Conferences, 4-8pm**
- 11/19 End of 1st Trimester
- 11/22 **Elementary Conferences
4-6pm**
- 11/22 School Board Mtg, 6:30pm
Board/Community Room
- 11/23 **1/2 Day of School Elementary
Conferences 12:30-6:30pm
NO School K4**
- 11/24 **1/2 Day of School All Students
NO School K4**
- 11/25 **NO SCHOOL**
Thanksgiving Day
- 11/26 **NO SCHOOL**
Thanksgiving Break
- 11/30 6th Gr Band, Orchestra, Choir Concert
7pm, WMS Gym



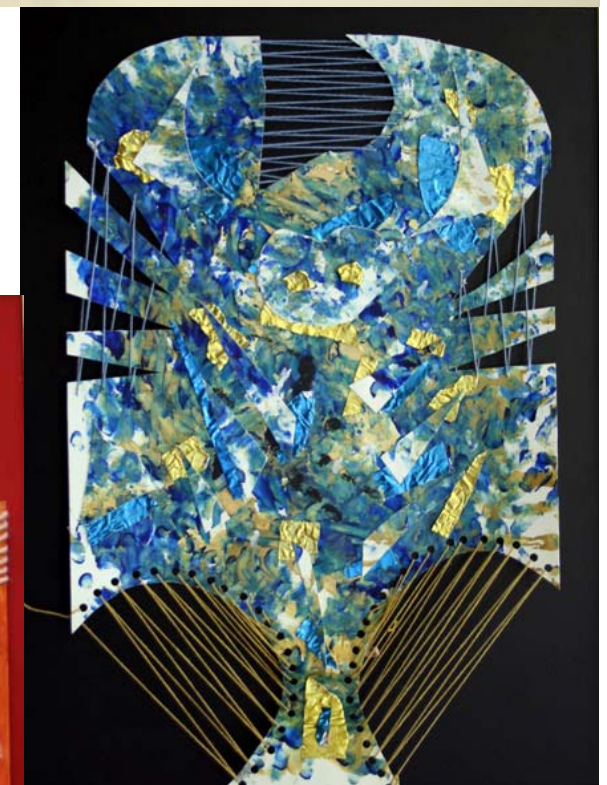
John G. Grade 8 WMS



Brianna O. Grade 8 WMS



Krista S. Grade 8 WMS



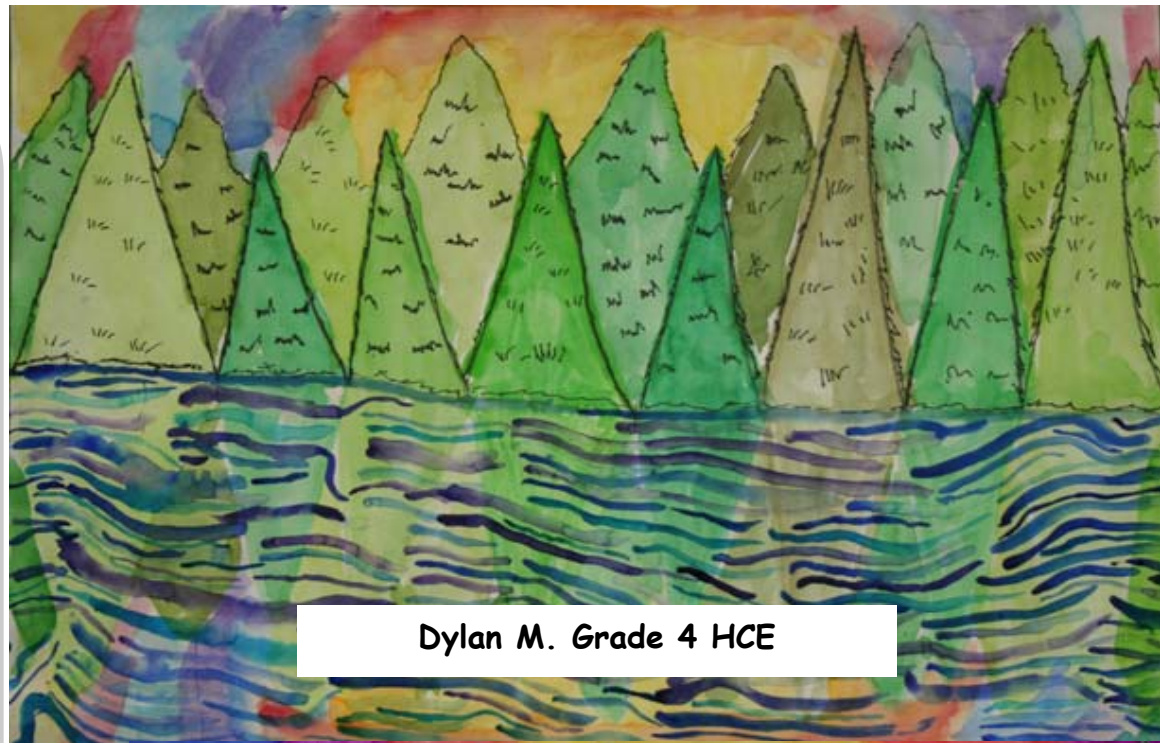
Nick K. Grade 8 WMS

November 2010

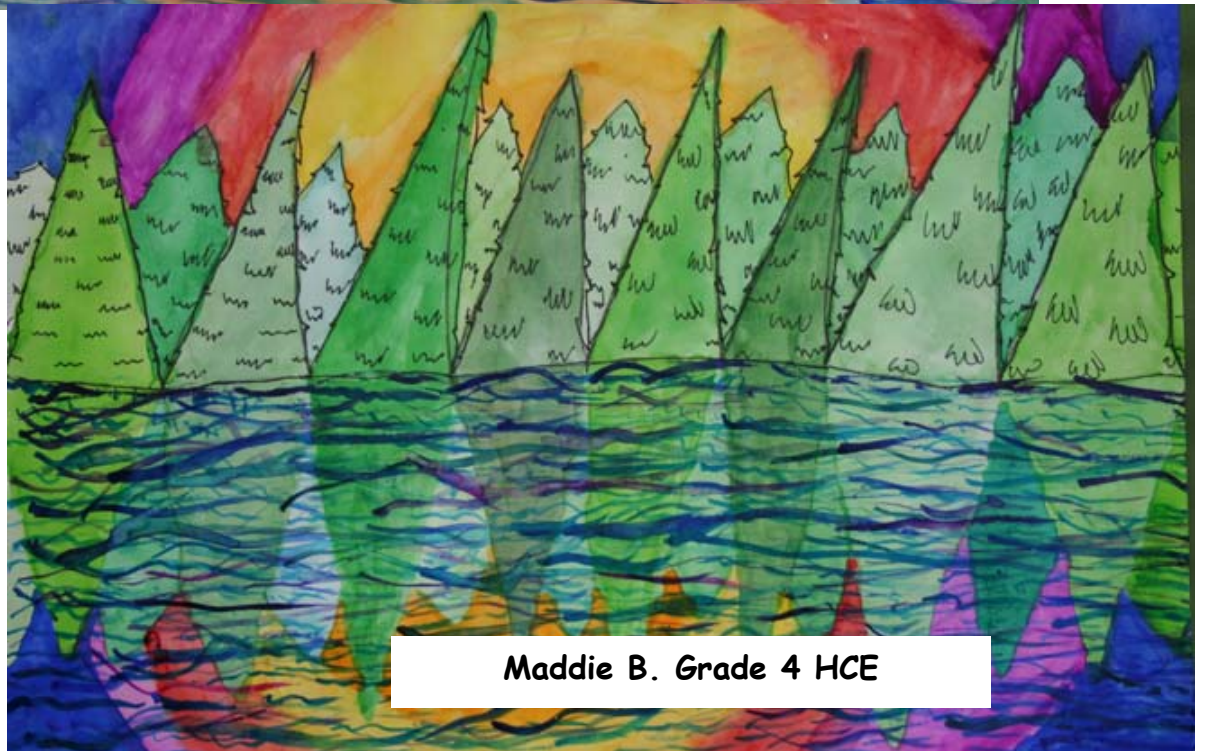
Sunday	Monday	Tuesday	Wednesday	Thursday	Friday	Saturday
	NO SCHOOL 1 Collaborative Release/ Workday	Election Day 2 <hr/>	3 <i>Band Booster Mtg, 7pm</i> <hr/> WKCE Test Window	4 <i>EES PTO Mtg, 6:30pm, LMC</i> WHS Winter Athletic Mtg, 6pm <hr/> Until 11/26	End of 1st Quarter 5 HCE Audio/Visual Screening <hr/> WHS Fall Play	6
Daylight Savings Time Ends 7 <hr/> WHS Fall Play	8 <hr/> School Board Mtg, 6:30pm Board/Community Room	9 <hr/> WKCE Test Window	10 <hr/> Until 11/26	Veteran's Day 11 WHS & WMS Conferences 4-8pm <hr/> <i>Falcon Booster Mtg 7pm</i>	EES Audio/Vision Screening 12	13
14	15 <hr/> Market Day Pickup 5-6pm WMS Café	16 <hr/> WKCE Test Window	17 <hr/> Until 11/26	18 <i>HCE PTO Mtg, 7pm, LMC</i>	End of 1st Trimester (Elementary) 19 <hr/> <i>HCE Movie Night</i>	20
21	22 WHS Student Senate Blood Drive Elementary Conferences 4-6pm School Board Mtg, 6:30pm Board/Community Room	1/2 Day of School Elementary Students Conferences 12:30-6:30pm NO SCHOOL K4 23	1/2 Day of School All Students NO SCHOOL K4 24	NO SCHOOL Thanksgiving Day 25	NO SCHOOL Thanksgiving Break 26	27
28	29	30 <hr/> 6th Gr Band, Orchestra, Choir, 7pm WMS Gym				

DECEMBER EVENTS AT A GLANCE

- 12/2 HCE Activity/Classroom Pictures
- 12/2 7th Gr Choir/7&8th Gr Orchestra
Concert, 7pm, WMS Gym
- 12/7 7th Gr Band/Concert Band
7pm, WHS Auditorium
- 12/9 8th Gr Band/Sinfonietta, 7:30pm
WHS Auditorium
- 12/10 WMS Holiday Dance, 6-9pm
- 12/13 School Board Mtg, 6:30pm
Board/Community Room
- 12/13 Market Day Pickup, 5-6pm
WMS Café
- 12/14 WHS Jazz Band Winter Concert,
7:30pm WHS Auditorium
- 12/16 EES Holiday Concert Gr 2&3, 2:15pm
& 6pm
- 12/16 HCE Gr 2 Holiday Concert, 9:15am
HCE Gr 3 Holiday Concert, 10am
- 12/16 WHS Choir/Orchestra Concert
7:30pm
- 12/23 **NO SCHOOL**
Winter Break Until 1/3



Dylan M. Grade 4 HCE



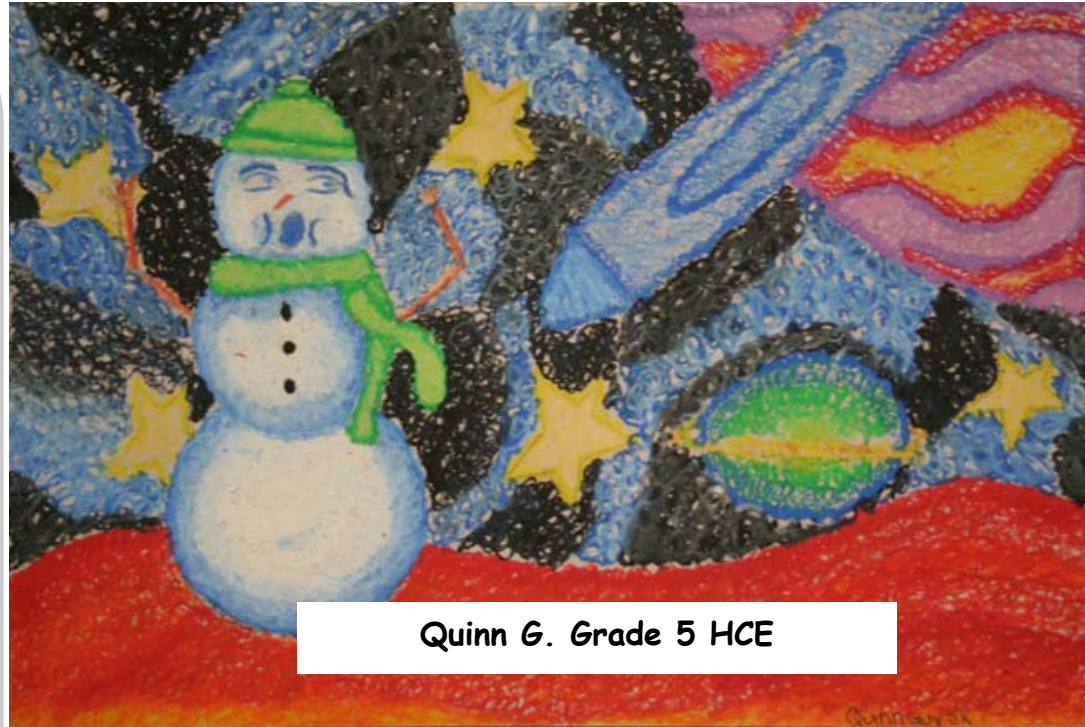
Maddie B. Grade 4 HCE

December 2010

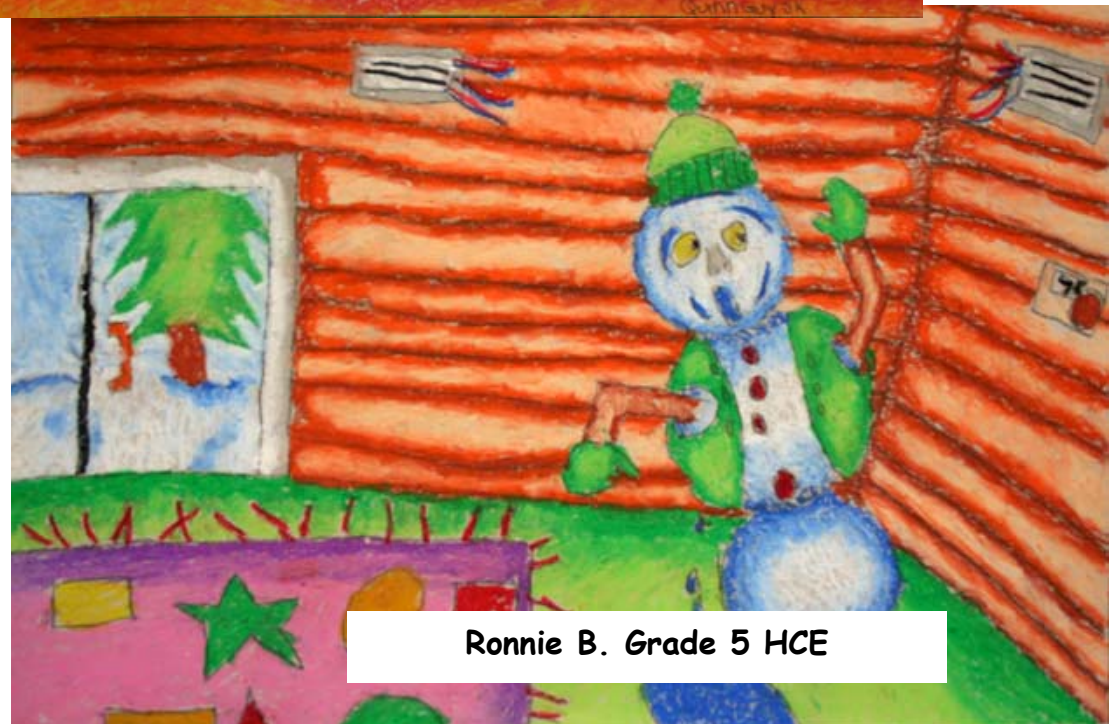
Sunday	Monday	Tuesday	Wednesday	Thursday	Friday	Saturday
			1 Band Booster Mtg, 7pm	2 HCE Activity/Classroom Pictures EES PTO Mtg, 6:30pm, LMC 7th Gr. Choir/7& 8th Gr Orchestra, 7pm, WMS Gym	3 WHS One Act Play	4 Whitnall Rotary Craft Fair
5	6	7	8 WMS Book Fair	9 8th Gr Band/Sinfonietta 7:30pm, WHS Auditorium Falcon Booster Mtg 7pm	10 WMS Holiday Dance 6-9pm	11
12	13 Market Day Pickup 5-6pm WMS Café School Board Mtg, 6:30pm Board/Community Room	14 WHS Jazz Winter Concert, 7:30pm, WHS Auditorium	15	16 EES Holiday Concert Gr. 2&3 2:15pm & 6pm HCE Gr 2 Holiday Concert, 9:15am HCE Gr 3 Holiday Concert, 10am WHS Choir/Orchestra Concert, 7:30pm	17	18
19	20	21 1st Day of Winter	22	23 NO SCHOOL Winter Break Until 1/3	24	25
26	27	28	29	30	31 New Year's Eve	

JANUARY EVENTS AT A GLANCE

- 1/3 **SCHOOL RESUMES**
- 1/10 School Board Mtg, 6:30pm
Board/Community Room
- 1/17 Martin Luther King Jr Birthday
- 1/18 2011-12 K4-K5 Information Night
K4 6pm, K5 6:30pm,
Board/Community Room
- 1/19-21 WHS 1st Semester Exams
- 1/21 End of 2nd Quarter
- 1/21 2011-12 K4 Classroom Tours by
Appointment
- 1/21 HCE Movie Night
- 1/24 **NO SCHOOL**
Teacher Inservice/Workday
- 1/24 School Board Mtg, 6:30pm
Board/Community Room
- 1/25 2011-12 K4/K5 Registration Night
6-7pm, Board/Community Room
- 1/27 WHS 8th Grade Open House, 6pm



Quinn G. Grade 5 HCE



Ronnie B. Grade 5 HCE

January 2011

Sunday	Monday	Tuesday	Wednesday	Thursday	Friday	Saturday
						New Year's Day 1
2	SCHOOL RESUMES 3	4	5 <i>Band Booster Mtg 7pm</i>	6 <i>EES PTO Mtg, 6:30pm, LMC</i>	7	8
9	10 School Board Mtg, 6:30pm Board/Community Room	11	12	13 <i>Falcon Booster Mtg 7pm</i>	14	15
16	17 Martin Luther King Jr Birthday	18 <i>2011-12 K4-K5 Information Night, K4 6pm, K5 6:30pm, Board/Community Room</i>	19	20 <i>WHS 1st Semester Exams HCE PTO Mtg, 7pm, LMC</i>	21 End of 2nd Quarter <i>2011-12 K4 Classroom Tours by Appointment HCE Movie Night</i>	22
23 NO SCHOOL Teacher Inservice/ Workday	24 School Board Mtg, 6:30pm Board/Community Room	25 <i>2011-12 K4/K5 Registration Night, 6-7pm, Board/ Community Room</i>	26	27 <i>WHS 8th Grade Open House, 6pm</i>	28	29
30	31					

**FEBRUARY
EVENTS
AT A GLANCE**

- 2/5 WHS Winter Formal, 7pm
- 2/10 WHS Club Picture Day
- 2/11 WMS Local Solo & Ensemble Festival, 3-6:30pm, WMS
- 2/11 WMS Valentine Dance, 6-9pm WMS
- 2/12 Lincoln's Birthday
- 2/14 School Board Mtg, 6:30pm
WHS Library
- 2/15 Susan B Anthony Day
- 2/18 EES All School Dance, WMS
6:30-9pm
- 2/21 President's Day
- 2/22 Washington's Birthday
- 2/24 **WHS & WMS Conferences
4-8pm**
- 2/25 **NO SCHOOL**
Collaborative Release/Workday
- 2/28 School Board Mtg, 6:30pm
Board/Community Room

Julie W. Grade 12 WHS



Janna W. Grade 9 WHS

Emily W. Grade 10 WHS



February 2011

Sunday	Monday	Tuesday	Wednesday	Thursday	Friday	Saturday
		1	Groundhog Day 2 <i>Band Booster Mtg 7pm</i>	3 <i>EES PTO Mtg, 6:30pm LMC</i>	4	5 WHS Winter Formal, 7pm
6	7	8	9	10 WHS Club Picture Day <i>Falcon Booster Mtg 7pm</i>	11 WMS Local Solo & Ensemble Festival 3-6:30pm, WMS WMS Valentine Dance, 6-9pm WMS	Lincoln's Birthday 12
13	Valentine's Day 14 Market Day Pickup 5-6pm WMS Café' School Board Mtg, 6:30pm WHS Library	Susan B Anthony Day 15 <i>HCE PTO Spaghetti Dinner WHS, 5:15-7pm</i>	16	17 <i>HCE PTO Mtg, 7pm LMC</i>	EES All School Dance 18 WMS 6:30-9:00pm	19
20	President's Day 21	Washington's Birthday 22	23	24 WHS & WMS Conferences 4-8pm	NO SCHOOL 25 Collaborative Release/ Work Day	26
27	NO SCHOOL 28 Mid-Winter Break School Board Mtg, 6:30pm Board/Community Room					

MARCH EVENTS AT A GLANCE

- 3/3 WHS Spring Athletic Mtg
6pm
- 3/4 Casimir Pulaski Day
- 3/4 End of 2nd Trimester Elementary
- 3/5 District Solo and Ensemble
- 3/8 **Elementary Conferences
4-6pm**
- 3/10 **1/2 Day of School Elementary
Conferences 12:30-6:30pm
NO SCHOOL K4**
- 3/13 Daylight Savings Time Begins
- 3/14 School Board Mtg, 6:30pm
Board/Community Room
- 3/17 The Great Hunger in Ireland
St Patrick's Day
- 3/21 Market Day Pickup 5-6pm
WMS Café
- 3/22 WHS Sinfonietta/Jazz Band Concert
7:30m, Auditorium
- 3/24 WHS Concert Band/Orchestra
Concert, 7:30pm
- 3/25 End of 3rd Quarter
- 3/28 School Board Mtg, 6:30pm
Board/Community Room
- 3/29 EES Spring Concert Gr 5 6pm,
Gr 4 7:15pm



Jacob S. Grade 1 HCE

March 2011

Sunday	Monday	Tuesday	Wednesday	Thursday	Friday	Saturday
		1 <i>EES Project Fair/PTO Social, 6-8pm</i>	2 <i>Band Booster Mtg 7pm</i>	3 <i>EES PTO Mtg, 6:30pm LMC</i> <i>WHS Spring Athletic Mtg, 6pm</i>	4 Casimir Pulaski Day End of 2nd Trimester (Elementary)	5 District Solo and Ensemble
6	7	8 Elementary Conferences 4-6pm	9	10 1/2 Day of School Elementary Students Conferences 12:30-6:30pm NO SCHOOL K4 <i>Falcon Booster Mtg 7pm</i>	11 <i>WHS Musical</i>	12
Daylight Savings Time Begins 13	14 School Board Mtg, 6:30pm Board/Community Room	15	16 <i>WHS Student Senate Blood Drive</i>	17 The Great Hunger in Ireland St. Patrick's Day <i>HCE PTO Mtg, 7pm, LMC</i>	18 <i>HCE PTO Spring Dance, 6:30pm</i>	19
20	21 <i>Market Day Pickup 5-6pm</i> <i>WMS Café</i>	22 <i>WHS Sinfonietta/Jazz Band Concert, 7:30pm</i>	23 <i>EES Book Fair</i>	24 <i>EES PTO Spaghetti Dinner 5-7pm, Main Gym</i> <i>WHS Concert Band/ Orchestra Concert, 7:30pm</i>	25 End of 3rd Quarter	26
27	28 School Board Mtg, 6:30pm Board/Community Room	29 <i>EES Spring Concert Gr 5, 6pm, Gr 4, 7:15pm</i>	30	31		

APRIL EVENTS AT A GLANCE

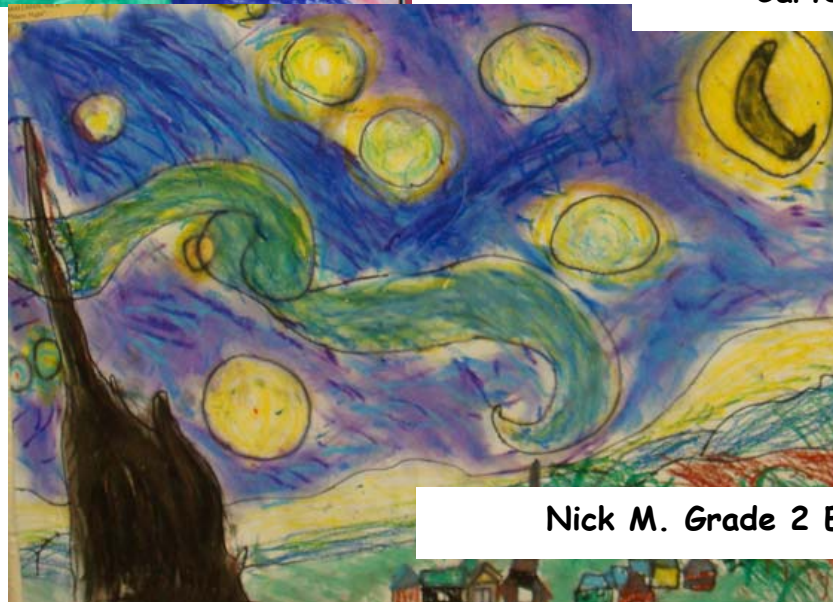
- 4/6 HCE Family Math Night
- 4/8 Prisoner of War Remembrance Day
- 4/13 American's Creed Day
- 4/13 EES Family Math Night
- 4/13 NHS Induction, 6:30pm
- 4/14 HCE Kindergarten/1st Grade Spring Sing, 9:15am
- 4/18 Market Day Pickup 5-6pm
WMS Café
- 4/18 School Board Mtg, 6:30pm
Board Community Room
- 4/19 Patriot's Day
- 4/21 **1/2 Day of School All Students
NO SCHOOL K4**
- 4/21-5/2 Spring Break
- 4/22 Earth Day
- 4/29 Arbor Day



Jordan K. Grade K EES



Carter W. Grade K EES



Nick M. Grade 2 EES

April 2011

Sunday	Monday	Tuesday	Wednesday	Thursday	Friday	Saturday
					April Fool's Day 1	2
3	4	5	6 HCE Family Math Night, 6-7:30pm Band Booster Mtg 7pm	7 EES PTO Mtg, 6:30pm LMC	8 Prisoner of War Remembrance Day Observed	9 ACT Test
10	11	12	13 American's Creed Day EES Family Math Night, 6-7:30pm NHS Induction, 6:30pm	14 HCE Kindergarten/1st Grade Spring Sing, 9:15am HCE PTO Mtg, 7pm LMC Falcon Booster Mtg 7pm	15	16
17	18 Market Day Pickup 5-6pm WMS Café School Board Mtg, 6:30pm Board/Community Room	19 Patriot's Day HCE Project Fair Drop off	20 HCE PTO Ice Cream Social/ Basket Bash & Project Fair 6-8pm	21 1/2 Day of School All Students NO SCHOOL K4 Spring Break Until 5/2	22 Earth Day	23
Easter 24	25	26	27 Administrative Professional Day	28	29 Arbor Day	30

**MAY
EVENTS
AT A GLANCE**

5/2	SCHOOL RESUMES	5/14	WHS Prom
5/2	AP Chemistry Exam AM	5/16	WHS Jazz Blowout, 7:30pm, WHS Auditorium
5/3	AP Spanish Exam AM	5/18	Gr 4&5 Instrumental Concert, WMS Gym, 6:30pm
5/4	AP Calculus Exam AM	5/18	6th Gr Band/Choir Concert, WMS Gym, 7:30pm
5/4	EES Class/Spring Pictures	5/19	WHS Bands Senior Awards
5/5	AP English Lit Exam AM	5/23	Market Day Pickup 5-6pm WMS Café
5/5	HCE Class/Group Pictures	5/23	School Board Mtg, 6:30pm Board Community Room
5/6	AP US History Exam AM	5/24	WHS Choir Concert, 7:30pm
5/6	AP Studio Art Portfolios Due PM	5/25	7th Gr Band/Choir Concert 7pm, WMS Gym
5/6	MS Spring Dance, 6-9pm	5/25	WHS Senior Awards Night
5/9	AP Biology Exam AM	5/26	EES Gr K & 1 Concert, 9:15am
5/9	School Board Mtg, 6:30pm Board/Community Room	5/26	WHS/WMS Orchestra Awards Concert, 7pm
5/10	AP French Exam PM	5/27	6,7&8th Gr & WHS Orchestra Concert, 7pm WHS Auditorium
5/12	HCE Gr 4 Spring Sing, 6:30pm HCE Gr 5 Spring Sing, 7:30pm	5/30	NO SCHOOL Memorial Day
5/13	MS Musical, 7pm WHS Auditorium	5/31- 6/2	Senior Exams



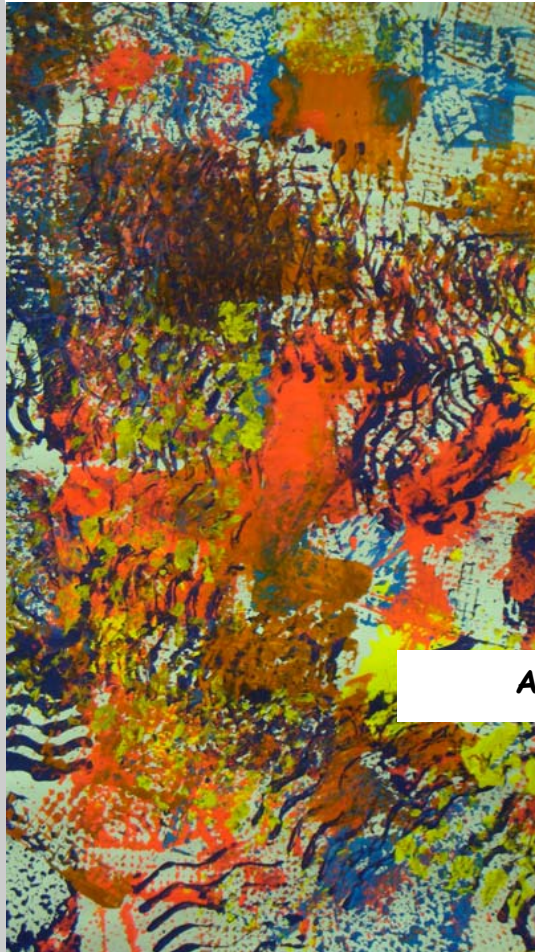
Nicole D. Grade 6 WMS

May 2011

Sunday	Monday	Tuesday	Wednesday	Thursday	Friday	Saturday
1	SCHOOL RESUMES 2 AP Chemistry Exam AM	AP Spanish Exam AM 3	AP Calculus Exam AM 4 EES Class/Spring Pictures <i>Band Booster Mtg 7pm</i>	AP English Lit Exam AM 5 HCE Class/Group Pictures <i>EES PTO Mtg, 6:30pm LMC</i>	AP US History Exam AM 6 AP Studio Art Portfolios Due PM MS Spring Dance, 6-9pm	7
Mother's Day 8	AP Biology Exam AM 9 School Board Mtg, 6:30pm Board/Community Room	AP French Exam PM 10	11 <i>WMS Book Fair</i> <i>EES Volunteer Appreciation Luncheon</i> <i>HCE Volunteer Appreciation Luncheon, 3:30pm</i>	HCE Gr 4 Spring Sing 12 6:30pm HCE Gr 5 Spring Sing 7:30pm <i>Falcon Booster Mtg 7pm</i>	13 MS Musical, 7pm WHS Auditorium	14 WHS Prom
15	16 WHS Jazz Blowout, 7:30pm, WHS Auditorium	17 <i>HCE Tailgate Tuesday, 3:30-5pm</i>	18 Gr 4&5 Instrumental Music Concert, WMS 6:30pm 6th Gr Band/Choir Concert 7:30pm, WMS Gym	19 WHS Bands Senior Awards Concert <i>HCE PTO Mtg, 7pm, LMC</i>	20 <i>EES PTO Spring Fling</i> <i>HCE PTO Student Rewards Carnival</i>	21
22	23 Market Day Pickup 5-6pm WMS Café' School Board Mtg, 6:30pm Board/Community Room	24 WHS Choir Concert, 7:30pm	25 7th Gr Band/Choir Concert 7:00pm, WMS Gym WHS Senior Awards Night	EES Gr. K & 1 Concert 26 9:15am WHS/WMS Orchestras Awards Concert, 7pm	27 6,7,8th Gr & WHS Orchestra Concert 7:00pm, WHS Auditorium	28
29	NO SCHOOL 30 Memorial Day	31 WHS Senior Exams				

JUNE EVENTS AT A GLANCE

- 6/1-6/2 WHS Senior Exams
- 6/1 8th Gr Band/Choir Concert
7:00pm, WMS Gym
- 6/1 Market Day Pickup
5-6pm WMS Café
- 6/3 WHS Senior Breakfast/Graduation
Practice, 8am
- 6/5 WHS Graduation, 1pm
- 6/8- WHS Semester 2 Exams
- 6/10 1/2 Day of School All Students
NO SCHOOL K4
- 6/10 End of 4th Quarter
Teacher Workday PM
- 6/13 School Board Mtg, 6:30pm
Board/Community Room
- 6/27 School Board Mtg, 6:30pm
Board/Community Room



Austin H. Grade K EES



Iva S. Grade 6 WMS



Alex S. Grade 12 WHS

June 2011

Sunday	Monday	Tuesday	Wednesday	Thursday	Friday	Saturday
			<p style="text-align: center;">1</p> <p style="text-align: center;">—————WHS Senior Exams—————</p> <p>8th Gr Band/Choir Concert 7:00pm, WMS Gym</p> <p>Market Day Pickup 5-6pm WMS Café <i>Band Booster Mtg 7pm</i></p>	<p style="text-align: center;">2</p>	<p style="text-align: center;">3</p> <p>WHS Senior Breakfast/ Graduation Practice, 8am</p>	<p style="text-align: center;">4</p>
<p style="text-align: center;">5</p> <p>WHS Graduation, 1pm</p>	<p style="text-align: center;">6</p>	<p style="text-align: center;">7</p>	<p style="text-align: center;">8</p> <p style="text-align: center;">—————WHS Semester 2 Exams—————</p> <p style="text-align: center;"><i>Falcon Booster Mtg 7pm</i></p>	<p style="text-align: center;">9</p>	<p style="text-align: center;">10</p> <p>1/2 Day of School All Students NO SCHOOL K4</p> <p>Last Day of School End of 4th Quarter</p> <p style="text-align: center;">Teacher Workday PM</p>	<p style="text-align: center;">11</p>
<p style="text-align: center;">12</p>	<p style="text-align: center;">13</p> <p>School Board Mtg, 6:30pm Board/Community Room</p>	<p style="text-align: center;">14</p> <p>Flag Day</p>	<p style="text-align: center;">15</p>	<p style="text-align: center;">16</p>	<p style="text-align: center;">17</p>	<p style="text-align: center;">18</p>
<p style="text-align: center;">19</p>	<p style="text-align: center;">20</p>	<p style="text-align: center;">21</p> <p>1st Day of Summer</p>	<p style="text-align: center;">22</p>	<p style="text-align: center;">23</p>	<p style="text-align: center;">24</p>	<p style="text-align: center;">25</p>
<p style="text-align: center;">26</p>	<p style="text-align: center;">27</p> <p>School Board Mtg, 6:30pm Board/Community Room</p>	<p style="text-align: center;">28</p>	<p style="text-align: center;">29</p>	<p style="text-align: center;">30</p>		